



Morleys – Brixton



# DIA Systems Limited Complete Product Guide



European Office  
Dayton House  
Bolney Avenue, Peacehaven  
East Sussex  
BN10 8HF  
England

Tel: +44 (0) 1273 582241  
Email: [sales@diasystems.co.uk](mailto:sales@diasystems.co.uk)

[www.diagroup.co.uk](http://www.diagroup.co.uk)

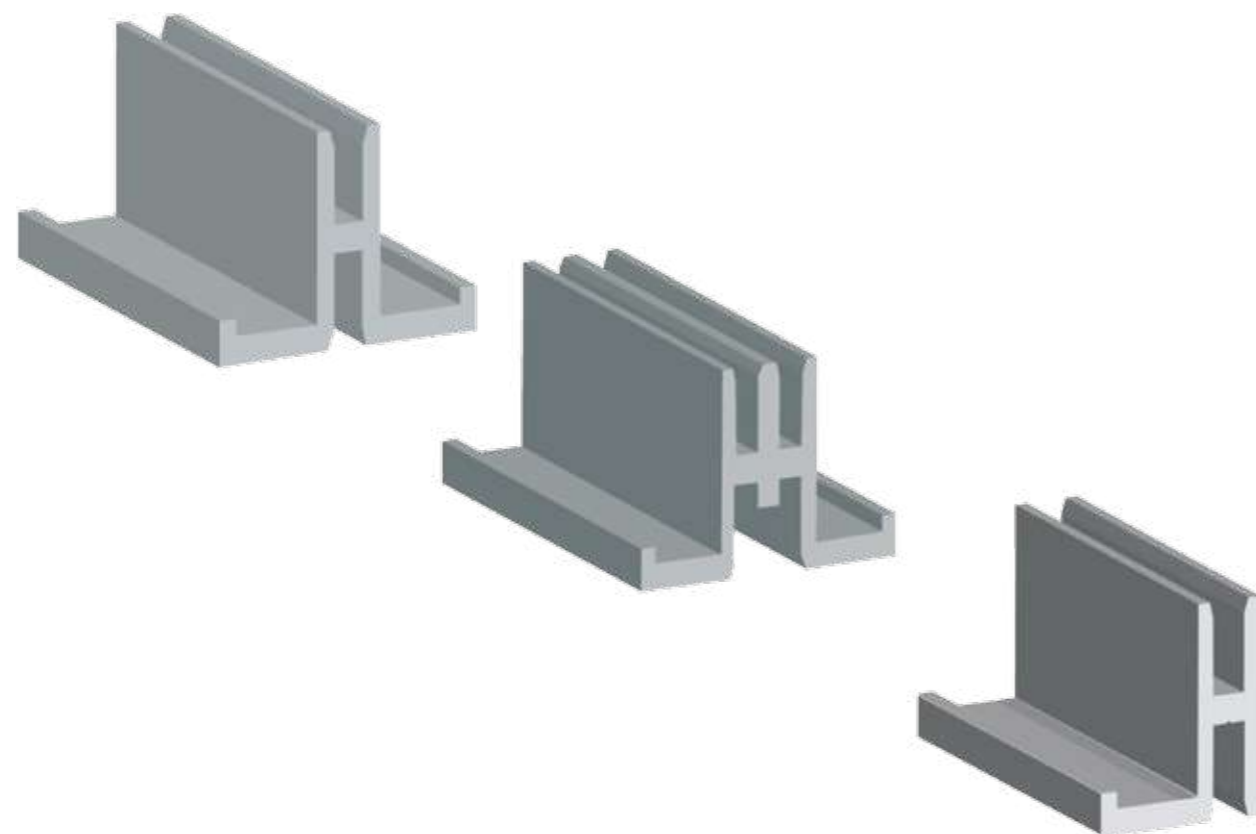
Aluminium Extrusions  
& Retail Display Systems



# Why DIA Systems?

Designs in Aluminium, now trading as DIA Systems Limited, was established in 1997 and has now become a global force within the retail and shopfitting industry.

Starting with only a handful of profiles which were sold within the UK, we now sell to over 27 countries worldwide and stock over 120 products. We understand the need for working within the shop fitting industry and pride ourselves on the service and quality we offer, as well as ensuring that the products are delivered to your exact specifications.



## Contents

Introduction	2
UPRIGHTS & FREESTANDING UPRIGHT SYSTEM	5
Slotted Sections	5
Shelf Brackets & Mild Steel Display Accessories	12
Back Bar System & Accessories	16
HORIZONTAL SHELF HOLDERS SYSTEM	18
Horizontal Shelf Holders	18
Horizontal System Accessories	20
MAGNETIC SOCKET SYSTEM	23
CROSS RAIL SYSTEM	24
SLATWALL PANEL SYSTEM	26
Slatwall Panel System	26
Slatwall Accessories	30
ALUMINIUM EXTRUSIONS	32
Glass Sections	32
Oddments	34
MDF Shelf Holder, Wallboard Trims & Corner Sections	36
Angles, T Sections & Flatbars	42
BESPOKE EXTRUSIONS	45
STANDARD PROFILES	46
BESPOKE MILD STEEL FRAMEWORK	52



All of our aluminium extrusions are extruded, fabricated and finished within the UK. Our extrusions are produced to comply with EU tolerances EN755-9, fabricated to ISO 9001:2008 Quality Standards and our anodisers quality control is in line with Qualanod/BS EN ISO 7599.



## CarePlus Pharmacy – Ireland

Our 32mm pitch winged single slotted section and 250mm powdercoated straight shelf brackets being used in CarePlus Pharmacy in Ireland.

### PRODUCTS USED:

- FMR002-2600
- FMR004-2600
- ZSB/32/PAIR/GRY/S-250



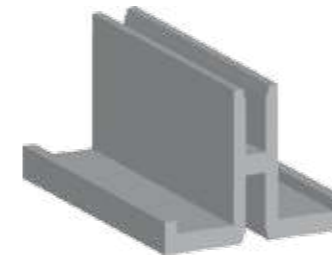
# Slotted Sections

We produce a range of slotted sections in 25 / 30 / 32 & 50m pitch, to suit from 13–20mm panels.

Also available in a free-standing option.

Our aluminium slotted sections offer versatility and strength, with minimalistic appearance which allows the fixing system not to detract away from the merchandise.

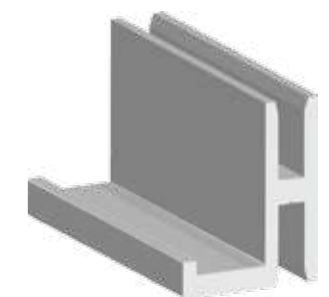
## Slotted Section 32mm & 50mm Pitch for 18/20mm Board



**FMR002 / FMR002B**  
**Single Slotted Section**  
 (12mm solid / 20mm slot)  
 (25mm solid / 25mm slot)  
 Lengths (mm): 2600 / 3000  
 MILL FINISH

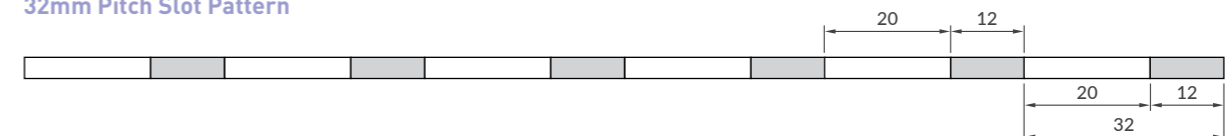


**FMR003 / FMR003B**  
**Double Slotted Section**  
 (12mm solid / 20mm slot)  
 (25mm solid / 25mm slot)  
 Lengths (mm): 2600 / 3000  
 MILL FINISH

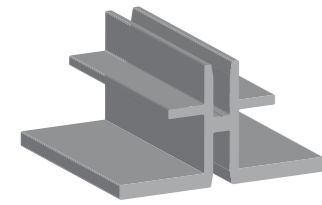


**FMR004 / FMR004B**  
**Single Slotted End of Run Section**  
 (12mm solid / 20mm slot)  
 (25mm solid / 25mm slot)  
 Lengths (mm): 2600  
 MILL FINISH

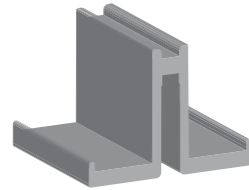
### 32mm Pitch Slot Pattern



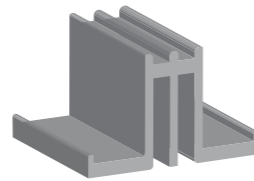
## Slotted Section 32mm Pitch for 18/20mm Board



**FMA001**  
**Single Slotted Double Winged Section**  
 (12mm solid / 20mm slot)  
 Lengths (mm): 1900  
 MILL FINISH



**FJDS002**  
**Single Slotted Section to suit 18-20mm board**  
 12mm solid / 20mm slot)  
 Lengths (mm): 2950  
 MILL FINISH



**FJDS003**  
**Double Slotted Section to suit 18-20mm board**  
 (12mm solid / 20mm slot)  
 Lengths (mm): 2950  
 MILL FINISH

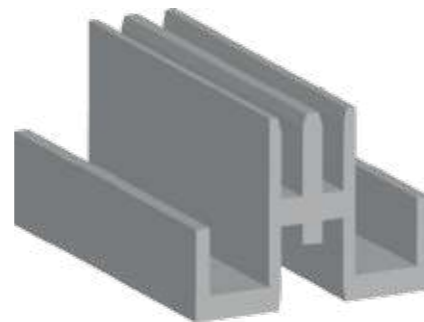


**FMR001**  
**Single Slotted 'Knock in' Section**  
 (12mm solid / 20mm slot)  
 Lengths (mm): 2600  
 MILL FINISH

## Slotted Section 32mm Pitch for 13/25mm Board

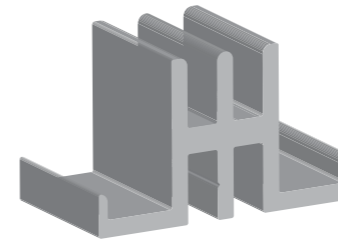


**FMR002A**  
**Single Slotted Section to suit 13mm Board**  
 (12mm solid / 20mm slot)  
 Lengths (mm): 2600  
 MILL FINISH

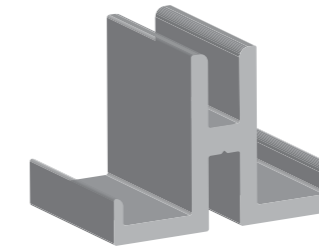


**FMR003A**  
**Double Slotted Section to suit 13mm Board**  
 (12mm solid / 20mm slot)  
 Lengths (mm): 2600  
 MILL FINISH

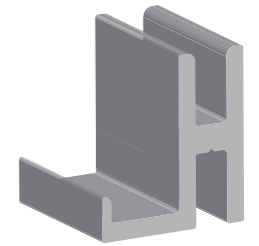
## Slotted Section 32mm Pitch for 18/20mm Board



**FMR002A**  
**Double Slotted Section to suit 13mm Board**  
 (13mm solid / 19mm slot)  
 Lengths (mm): 2500  
 MILL FINISH

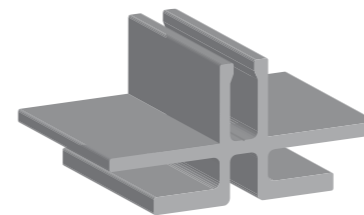


**FSS03**  
**Single Slotted Section to suit 13mm Board**  
 (13mm solid / 19mm slot)  
 Lengths (mm): 2500  
 MILL FINISH / SATIN ANODISED

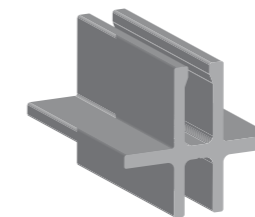


**FSS04**  
**Single Slotted End of Run Section to suit 13mm Board**  
 (13mm solid / 19mm slot)  
 Lengths (mm): 2500  
 MILL FINISH

## Slotted Section 50mm Pitch for 18/20mm Board



**FMR007**  
**Single Slotted Double Winged Section**  
 (25mm solid / 25mm slot)  
 Lengths (mm): 851 / 1251 / 1600 / 1700 / 1957  
 SATIN ANODISED / OPTION TO HAVE INSIDE SLOT PAINTED BLACK



**FMR008**  
**Single Slotted Single Winged Section**  
 (25mm solid / 25mm slot)  
 Lengths (mm): 3600  
 SATIN ANODISED / OPTION TO HAVE INSIDE SLOT PAINTED BLACK

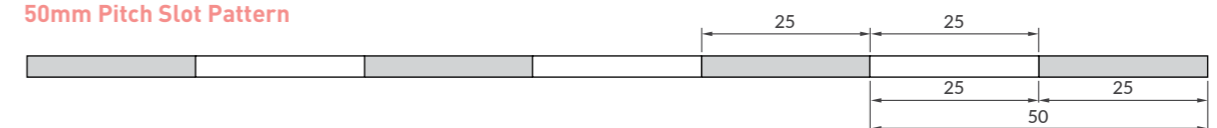


**FSS01**  
**Single Slotted Section**  
 (25mm solid / 25mm slot)  
 Lengths (mm): 2600  
 MILL FINISH



**FSSH0F/50**  
**Single Slotted Section Slot on Base**  
 (28mm solid / 22mm slot)  
 Lengths (mm): 1800 / 2200  
 MILL FINISH

50mm Pitch Slot Pattern



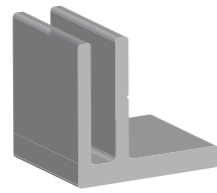
## Slotted Section 25mm, 30mm, 35mm Pitch



**FSS03/25**  
Single Slotted Section  
(9.4mm solid / 16mm open)

Lengths (mm): 2400

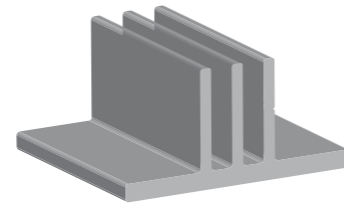
MILL FINISH



**FSS04/25**  
Single Slotted End of Run Section  
(9.4mm solid / 16mm open)

Lengths (mm): 2400

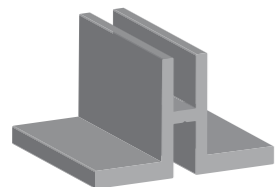
MILL FINISH



**FSS05/25**  
Double Slotted Section  
(9.4mm solid / 16mm open)

Lengths (mm): 2400

MILL FINISH



**FIDE001**  
Single Slotted Section  
(15mm solid / 15mm slot)

Lengths (mm): 3050

SATIN ANODISED



**FSP003**  
Double Slotted Section  
(19mm solid / 16mm slot)

Lengths (mm): 3000

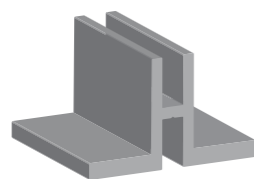
MILL FINISH



**FSP001**  
Single Slotted Section with Single Leg  
(19mm solid / 16mm slot)

Lengths (mm): 3000

MILL FINISH



**FIDE001E/35**  
Single Slotted Section  
(16mm solid / 19mm slot)

Lengths (mm): 3050

SATIN ANODISED



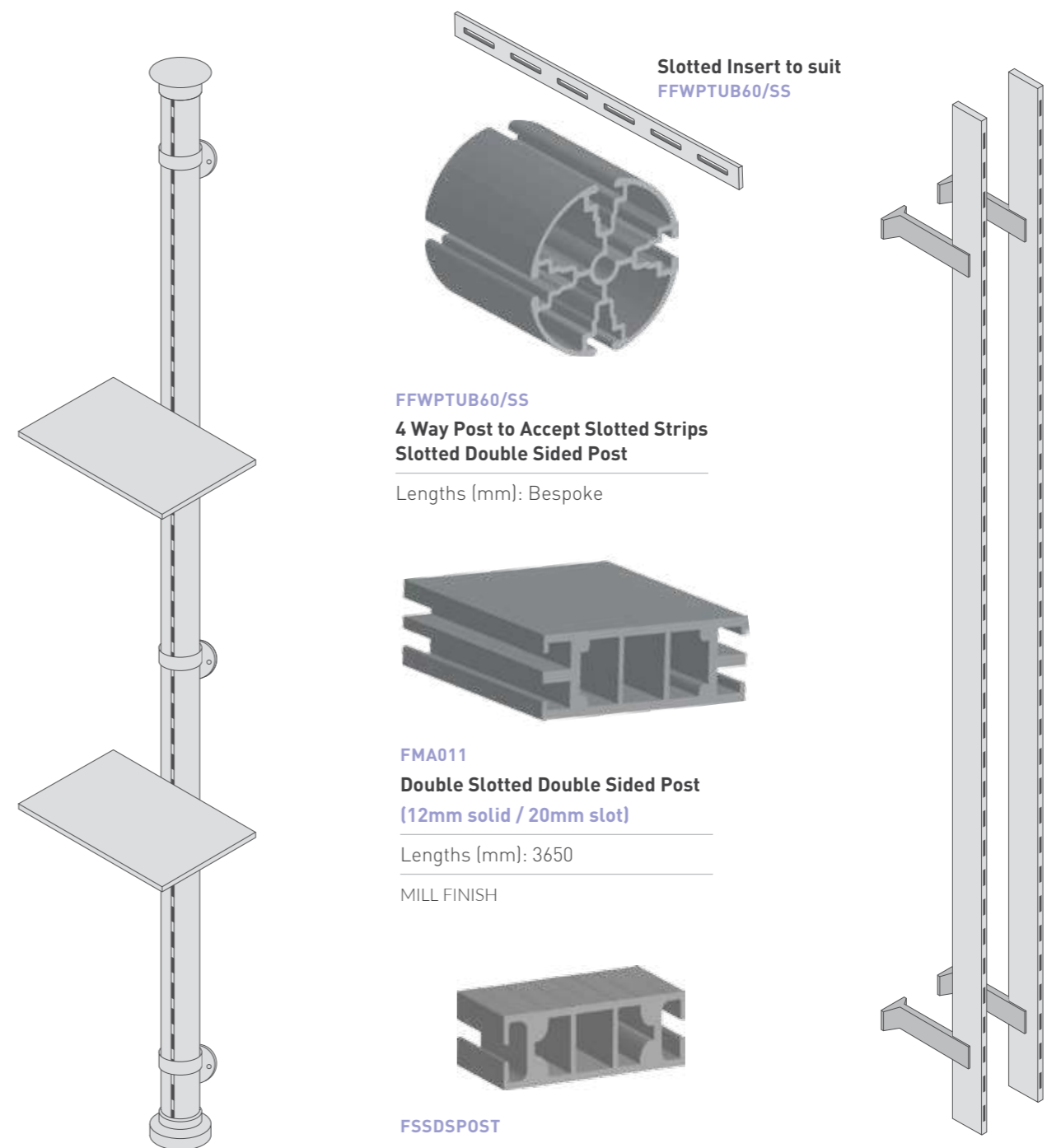
**FSS02/35**  
Single Slotted Section to suit 18mm Board  
(20mm solid / 15mm slot)

Lengths (mm): 2130

SATIN ANODISED

## Free Standing Slotted Sections

On this page you will see our range of free standing aluminium slotted 32mm/50mm pitch posts. We can design and manufacture wall fixings, floor & ceiling spigots to suit your requirement. All posts can be powder coated or anodised.



**Slotted Insert to suit FFWPTUB60/SS**

**FFWPTUB60/SS**  
4 Way Post to Accept Slotted Strips  
Slotted Double Sided Post

Lengths (mm): Bespoke

**FMA011**  
Double Slotted Double Sided Post  
(12mm solid / 20mm slot)

Lengths (mm): 3650

MILL FINISH

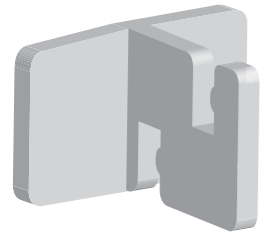
**FSSDSP0ST**  
Single Slotted Double Sided Post  
(12mm solid / 20mm slot)

Lengths (mm): 3650 / 5050

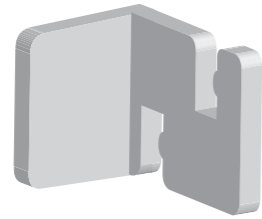
MILL FINISH

## Plastic Retaining Clips for Products

FMR002 / FMR003 / FMR004 / FMR002A  
 FMR003A / FMR002B / FMR003B / FMR004B  
 FJDS002 / FJDS003



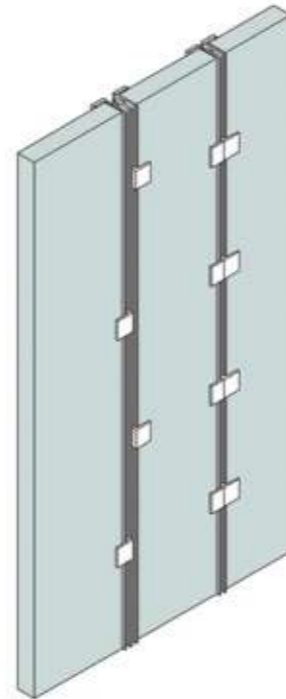
FCLIPC



FCLIPR



FCLIPL



### Case Study

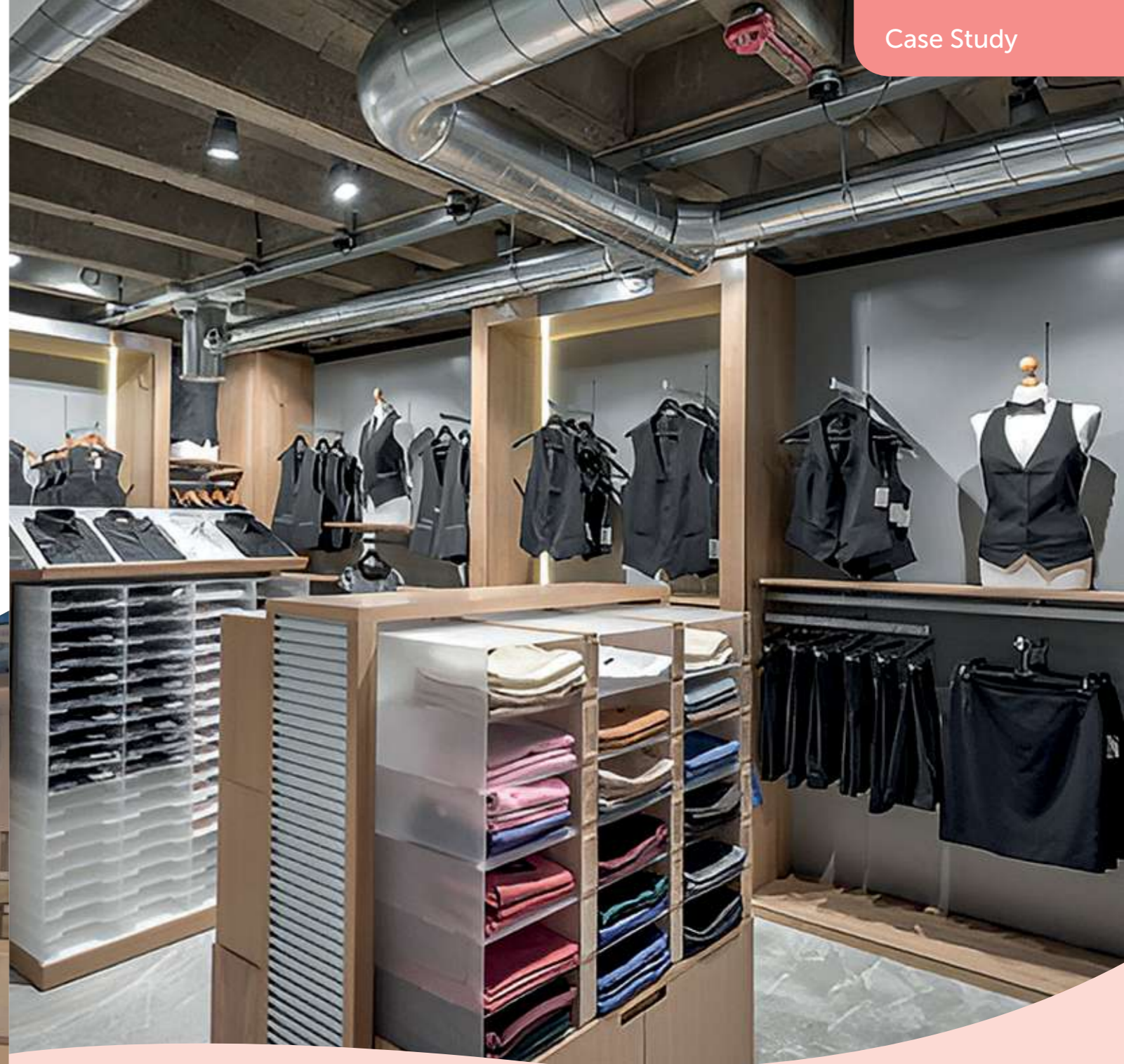


Wembley Park Market,  
 Wembley, London

Our 32mm pitch winged single slotted section and 250mm powdercoated straight shelf brackets.

PRODUCTS USED:

- FMR002-2600
- ZSB/32/PAIR/GRY/S-250



### Dennys

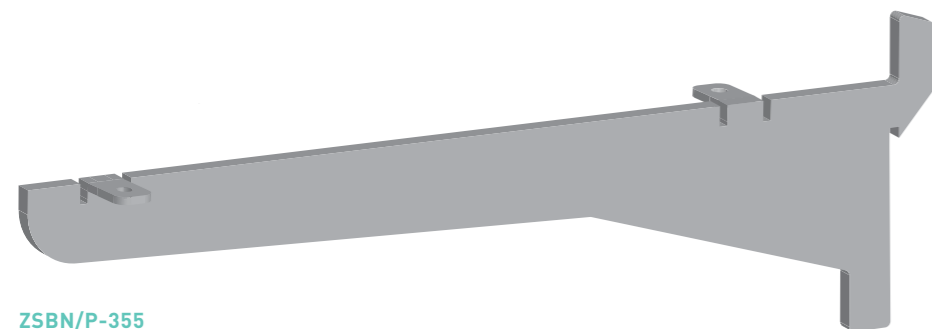
We supplied a variety of extrusions to the fashion retailer 'Dennys Brands' ranging from our standard 32mm pitch slotted sections, slatwall panels and accessories to suit.

**DENNYS  
 BRANDS**

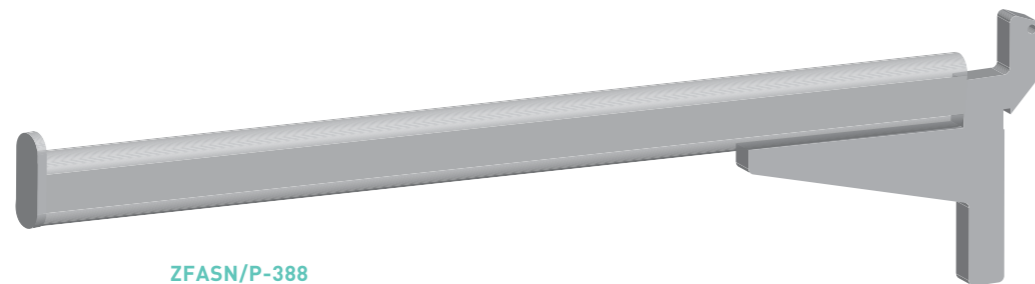
# Shelf Brackets & Mild Steel Display Accessories

We have the expertise to design bespoke shelf brackets, display rails, forward arms and other metal work display accessories. Smaller quantities of steel display equipment are manufactured within the UK and for larger quantities we can offer clients the option of Far East production.

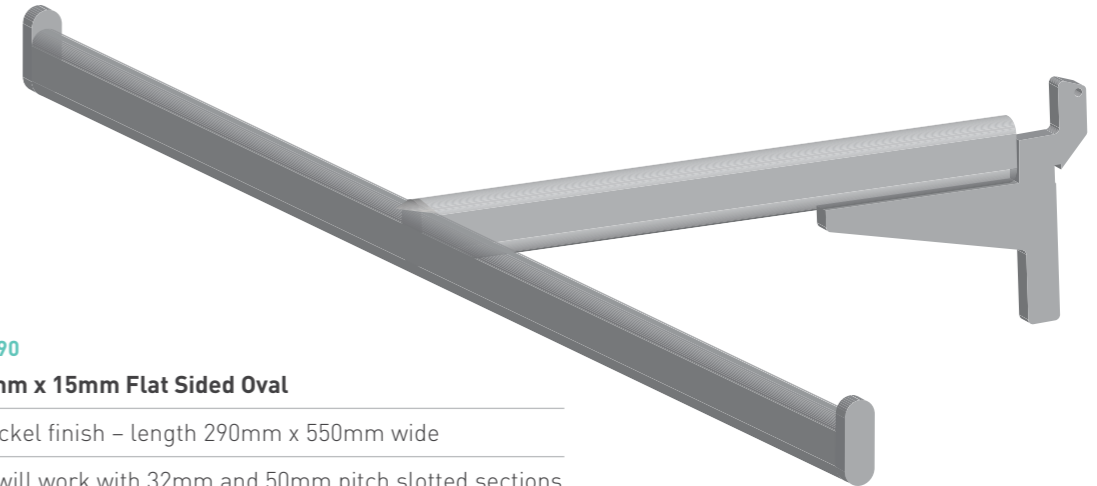
On the next 4 pages you will find a selection of stocked and made to order designs of arms and metal work display accessories.



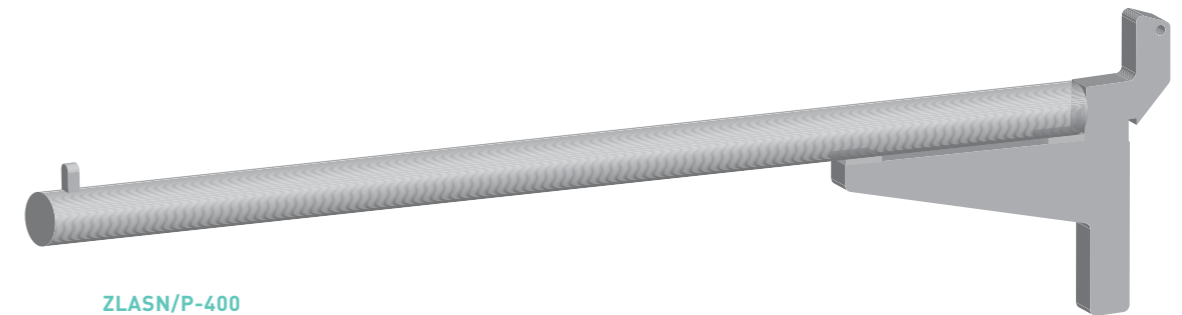
**ZSBN/P-355**  
**Pair Shelf Brackets to support Glass / MDF Shelves**  
 Brushed nickel finish – length 355mm  
 Accessory will work with 32mm and 50mm pitch slotted sections



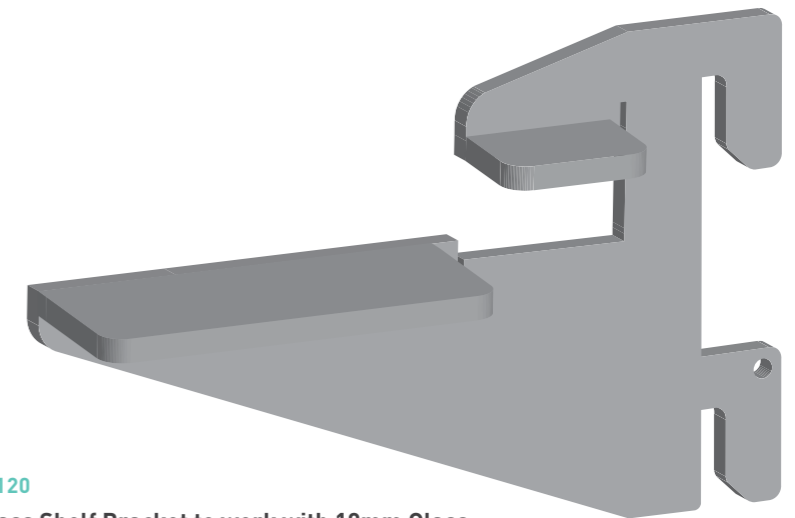
**ZFASN/P-388**  
**Forward Arm 30mm x 15mm Flat Sided Oval**  
 Brushed nickel finish – length 388mm  
 Accessory will work with 32mm and 50mm pitch slotted sections



**ZTASN/P-290**  
**T Arm 30mm x 15mm Flat Sided Oval**  
 Brushed nickel finish – length 290mm x 550mm wide  
 Accessory will work with 32mm and 50mm pitch slotted sections

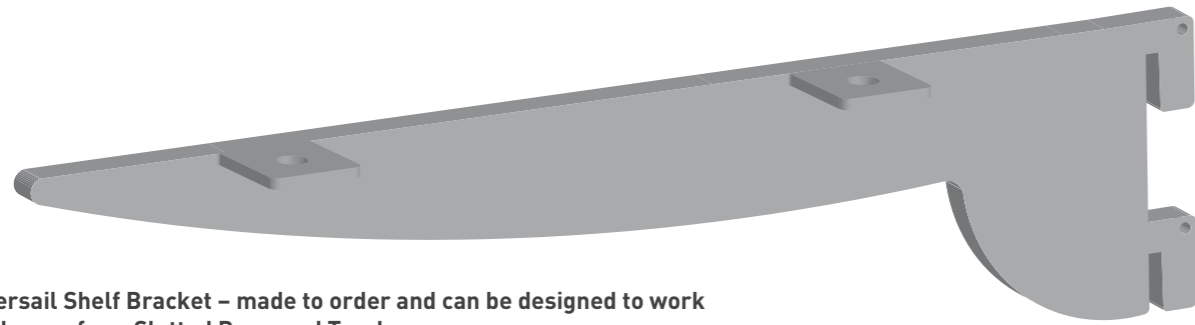


**ZLASN/P-400**  
**Forward Arm 19mm Diameter Tube**  
 Brushed nickel finish – length 400mm wide  
 Accessory will work with 32mm and 50mm pitch slotted sections



**ZGSBE10P/C-120**  
**Cantilever Glass Shelf Bracket to work with 10mm Glass**  
 Mirror chrome plated – length 120mm  
 Accessory will work with 50mm pitch slotted sections

These arms and accessories can be manufactured to your design to work with any of our slotted sections and can be manufactured from stainless steel or mild steel and come in a powder coated, mirror chrome plate or brushed nickel finish.

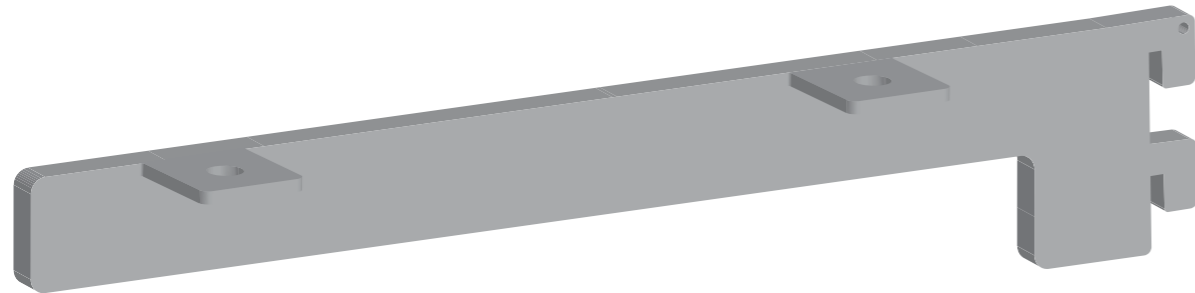


**Oversail Shelf Bracket – made to order and can be designed to work with any of our Slotted Recessed Tracks**

Manufactured from 3mm thick mild steel or stainless steel

Designed to hold glass shelf or MDF shelf (suction cups can be supplied)

Finishes available: MIRROR CHROME / STAINLESS STEEL / POWDER COATED

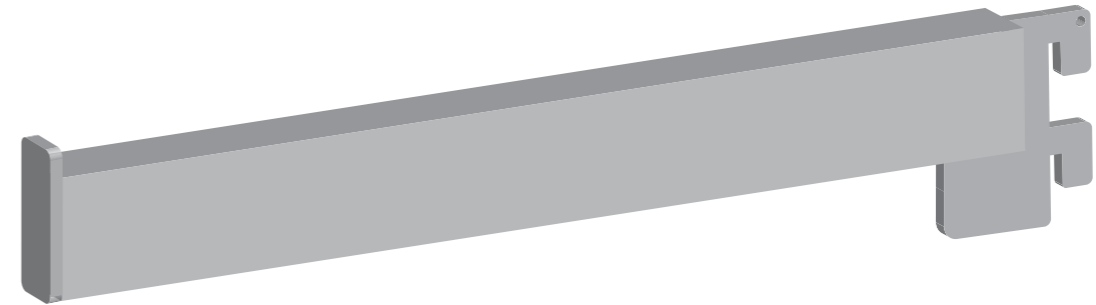


**Straight Shelf Bracket – made to order and can be designed to work with any of our Slotted Recessed Tracks**

Manufactured from 3mm thick mild steel or stainless steel

Designed to hold glass shelf or MDF shelf (suction cups can be supplied)

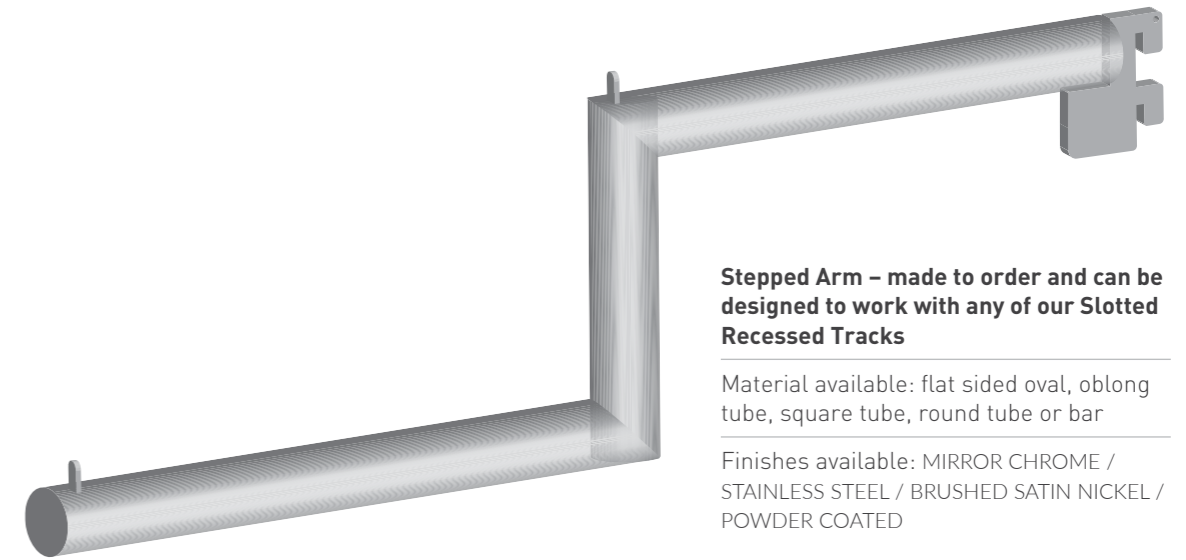
Finishes available: MIRROR CHROME / STAINLESS STEEL / POWDER COATED



**Forward Arm – made to order and can be designed to work with any of our Slotted Recessed Tracks**

Material available: flat sided oval, oblong tube, square tube, round tube or bar

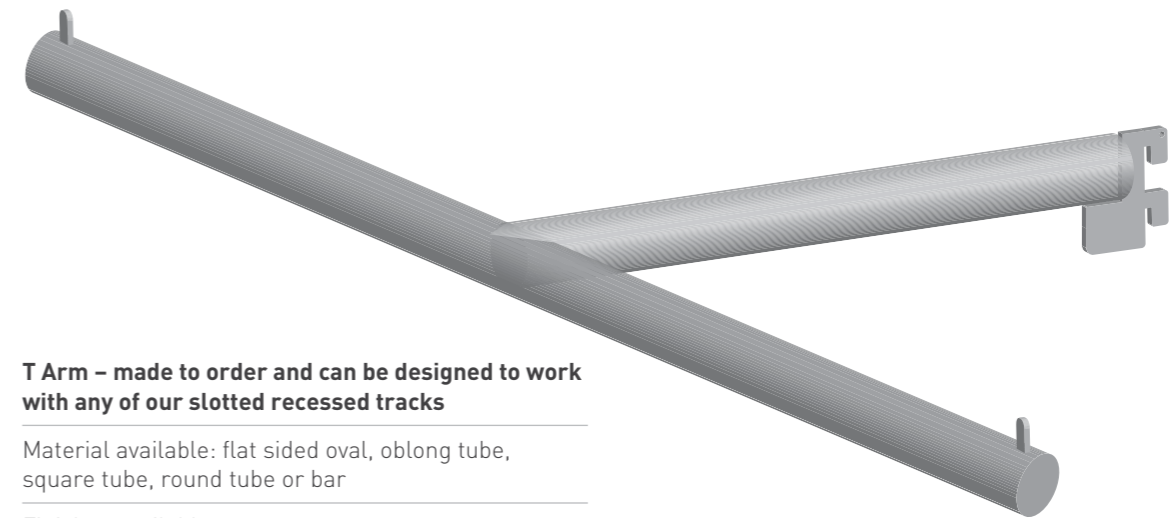
Finishes available: MIRROR CHROME / STAINLESS STEEL / BRUSHED SATIN NICKEL / POWDER COATED



**Stepped Arm – made to order and can be designed to work with any of our Slotted Recessed Tracks**

Material available: flat sided oval, oblong tube, square tube, round tube or bar

Finishes available: MIRROR CHROME / STAINLESS STEEL / BRUSHED SATIN NICKEL / POWDER COATED



**T Arm – made to order and can be designed to work with any of our slotted recessed tracks**

Material available: flat sided oval, oblong tube, square tube, round tube or bar

Finishes available: MIRROR CHROME / STAINLESS STEEL / BRUSHED SATIN NICKEL / POWDER COATED



# Back Bar System & Accessories

Our standard back bar system is an off-the-shelf solution that works with our 32mm pitch slotted sections.

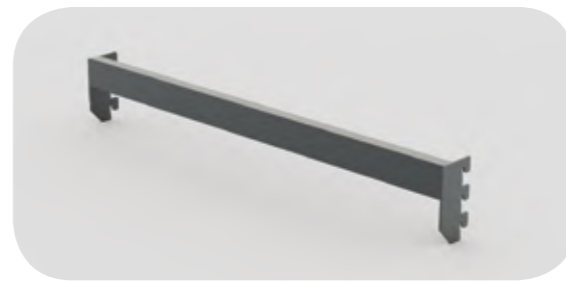
The back bar is offered in a width of 600mm or 1200mm. All of the accessories are designed to hook on. Suitable for lightweight or heavy weight applications. Comes in a matt black powder coated finish as standard.



**ZRSBPC/BLK-1200**  
**Back Bar Arm 1200mm centre to centre - 40mm x 20mm Oblong Tube**  
 Lengths (mm): 1200  
 POWDER COATED RAL 9004 BLACK MATT



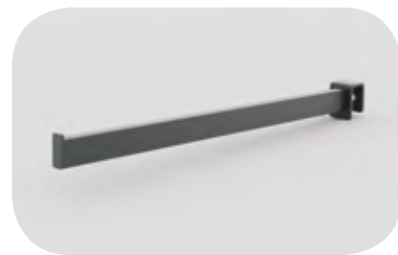
**ZSARMPC/BLK-400**  
**Stepped Arm to fit Back Bar - 25mm x 12mm Oblong Tube**  
 Lengths (mm): 400  
 POWDER COATED RAL 9004 BLACK MATT



**ZRSBPC/BLK-600**  
**Back bar 600mm centre to centre - 40mm x 20mm Oblong Tube**  
 Lengths (mm): 600  
 POWDER COATED RAL 9004 BLACK MATT



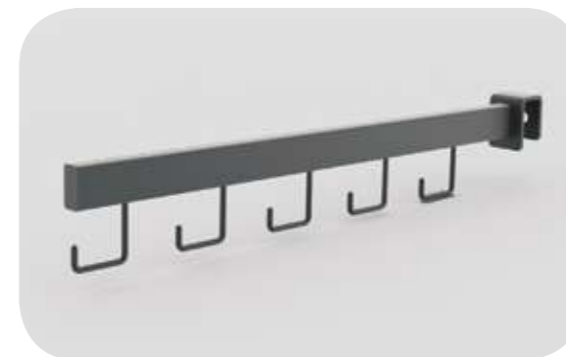
**ZFARMPC/BLK-250**  
**Forward Arm to fit Back Bar - 25mm x 12mm Oblong Tube**  
 Lengths (mm): 250  
 POWDER COATED RAL 9004 BLACK MATT



**ZFARMPC/BLK-400**  
**Forward Arm to fit Back Bar**  
 Lengths (mm): 400  
 POWDER COATED RAL 9004 BLACK MATT



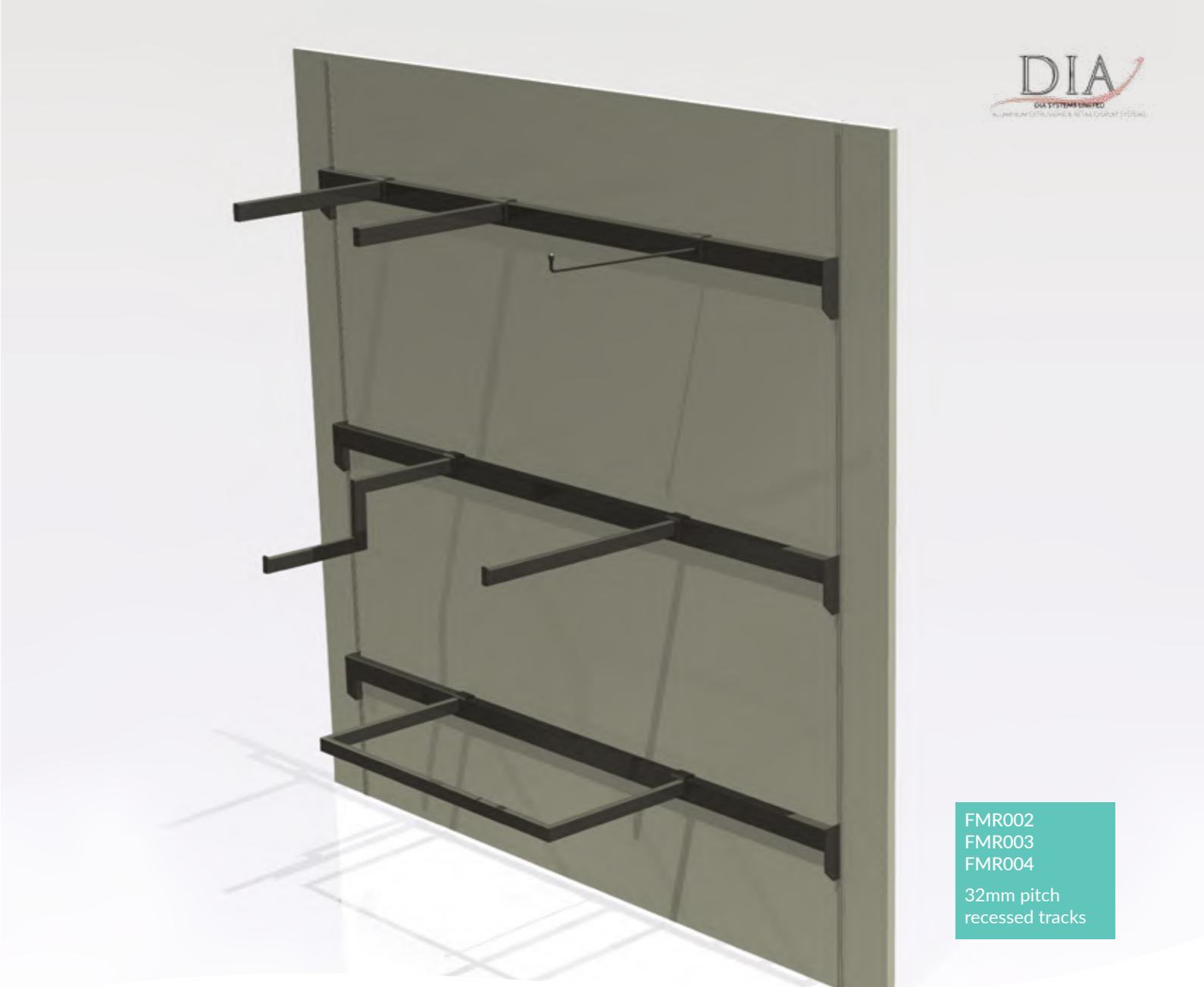
**ZDBARPC/BLK-300**  
**D Rail to fit Back Bar - 25mm x 12mm Oblong Tube**  
 Lengths (mm): 300x280 wide  
 POWDER COATED RAL 9004 BLACK MATT



**ZHOOKARMP/BLK-400**  
**Arm with hooks to fit Back Bar - 25mm x 12mm Oblong Tube**  
 Lengths (mm): 400  
 POWDER COATED RAL 9004 BLACK MATT



**ZDBARPC/BLK-600**  
**D Rail to fit Back Bar - 25mm x 12mm Oblong Tube**  
 Lengths (mm): 300x580 wide  
 POWDER COATED RAL 9004 BLACK MATT



FMR002  
 FMR003  
 FMR004  
 32mm pitch  
 recessed tracks

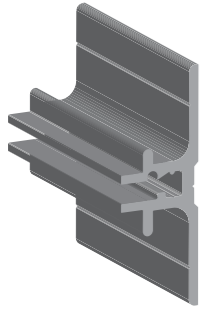
## HORIZONTAL SHELF HOLDERS SYSTEM

# Horizontal Shelf Holders

Aluminium horizontal shelf holders offer a discreet recessed option for holding 3mm / 6mm / 8–10mm glass and accessories horizontally.

All profiles can be supplied in fill finish, satin anodised, polished chemically brightened, linished and/or powdercoated\*.

\*Subject to lead times.



## FGSH3

Horizontal Shelf Holder to accept 3mm Glass / Board

Lengths (mm): 3750

ALL FINISHES AVAILABLE

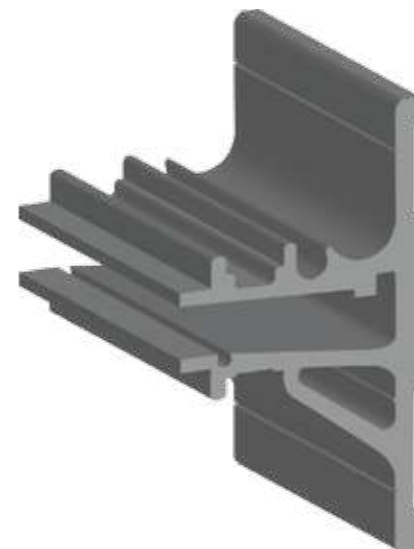


## FGSH6LED

Horizontal Shelf Holder to accept 6mm Glass / Board & Accessories

Lengths (mm): 3750

ALL FINISHES AVAILABLE

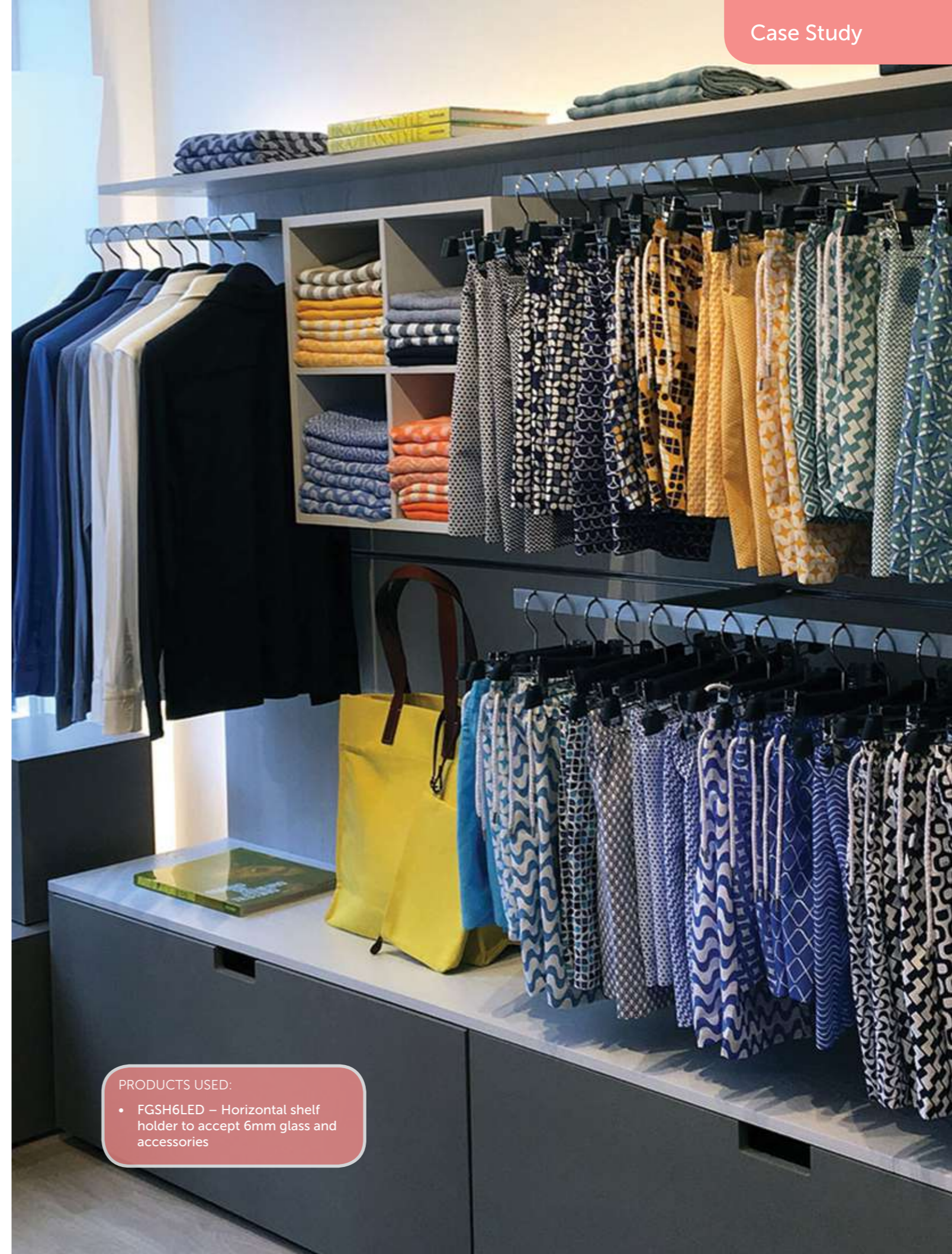


## FGSH8/10LED

Horizontal Shelf Holder to accept 8 / 10mm Glass / Board

Lengths (mm): 3750

ALL FINISHES AVAILABLE



### PRODUCTS USED:

- FGSH6LED – Horizontal shelf holder to accept 6mm glass and accessories

# Horizontal System

Aluminium Horizontal shelf holders offer a discreet recessed option for holding 3mm / 6mm / 8mm-10mm glass and accessories horizontally. Accessories are available in a matt or mirror polished chrome finish as standard.

We can offer bespoke equipment manufactured to customers specification too.



**HTARM**  
T Arm to suit **FGSH6LED** – 19mm Diameter Tube

Lengths (mm): 300x625 wide

MIRROR CHROME / MATT CHROME



**HDRAIL**  
Display Rail to suit **FGSH6LED** – 19mm Diameter Tube

Lengths (mm): 300x600 wide

MIRROR CHROME / MATT CHROME



**H3PRONG**  
Prong to suit **FGSH3** – 8mm Diameter Tube

Lengths (mm): 250

MIRROR CHROME / MATT CHROME



**HFARM**  
Forward Arm to suit **FGSH6LED** – 19mm Diameter Tube

Lengths (mm): 300

MIRROR CHROME / MATT CHROME



**H3PRONG**  
Prong to suit **FGSH3** – 8mm Diameter Bar

Lengths (mm): 150

MIRROR CHROME / MATT CHROME



**H3ARM**  
Stepped Arm to suit **FGSH6LED** – 19mm Diameter Tube

Lengths (mm): 300

MIRROR CHROME / MATT CHROME

'THE HARD WORK IN TRAINING PUTS YOU WHERE THE GOOD LUCK CAN FIND YOU''



## The Run Hub - Ireland

Our 35mm magnetic sockets and 100mm spigots being used in The Run Hub in Ireland.

Products used:

- SSOCKET
- SSPIGOTS/S-100



## MAGNETIC SOCKET SYSTEM

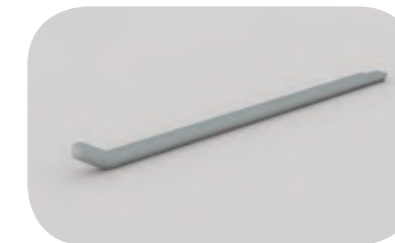


# 35mm Diameter & 14mm Diameter 'Magnetic' Socket System

Created as an alternative to the horizontal system and vertical system, the socket system is perfect for minimalist displays. The sockets are available in a matt chrome with the accessories in a brushed chrome finish. Browse our selection of options below.



**STARM**  
T Arm - 19mm Diameter Tube  
Lengths (mm): 240x490 wide  
BRUSHED CHROME / MATT CHROME



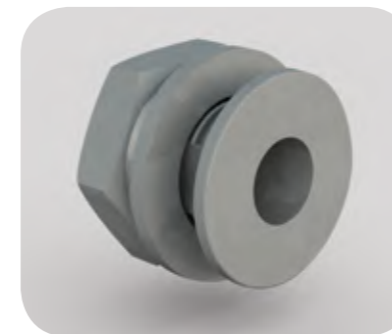
**SMPRON**  
Prong - 8mm Diameter  
Lengths (mm): 200  
BRUSHED CHROME



**SSARM**  
Stepped Arm - 19mm Diameter Tube  
Lengths (mm): 300  
BRUSHED CHROME / MATT CHROME



**SFARM**  
Forward Arm - 19mm Diameter Tube  
Lengths (mm): 300  
BRUSHED CHROME / MATT CHROME



**SSOCKET**  
Aluminium Socket 35mm Outside Diameter - to accept Magnetic Accessories  
SATIN ANODISED



**SMSOCKET**  
Aluminium Socket 14mm Outside Diameter - to accept 8mm Prong Accessories  
SATIN ANODISED



**SSOCKETB/P**  
Fixing Plate for SSOCKET  
Manufactured from 3mm thick mild steel  
ZINC PLATED

# Cross Rail System

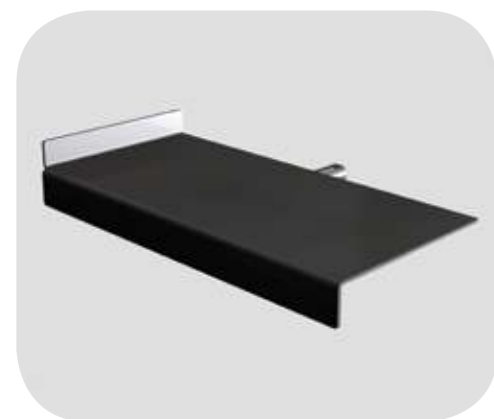
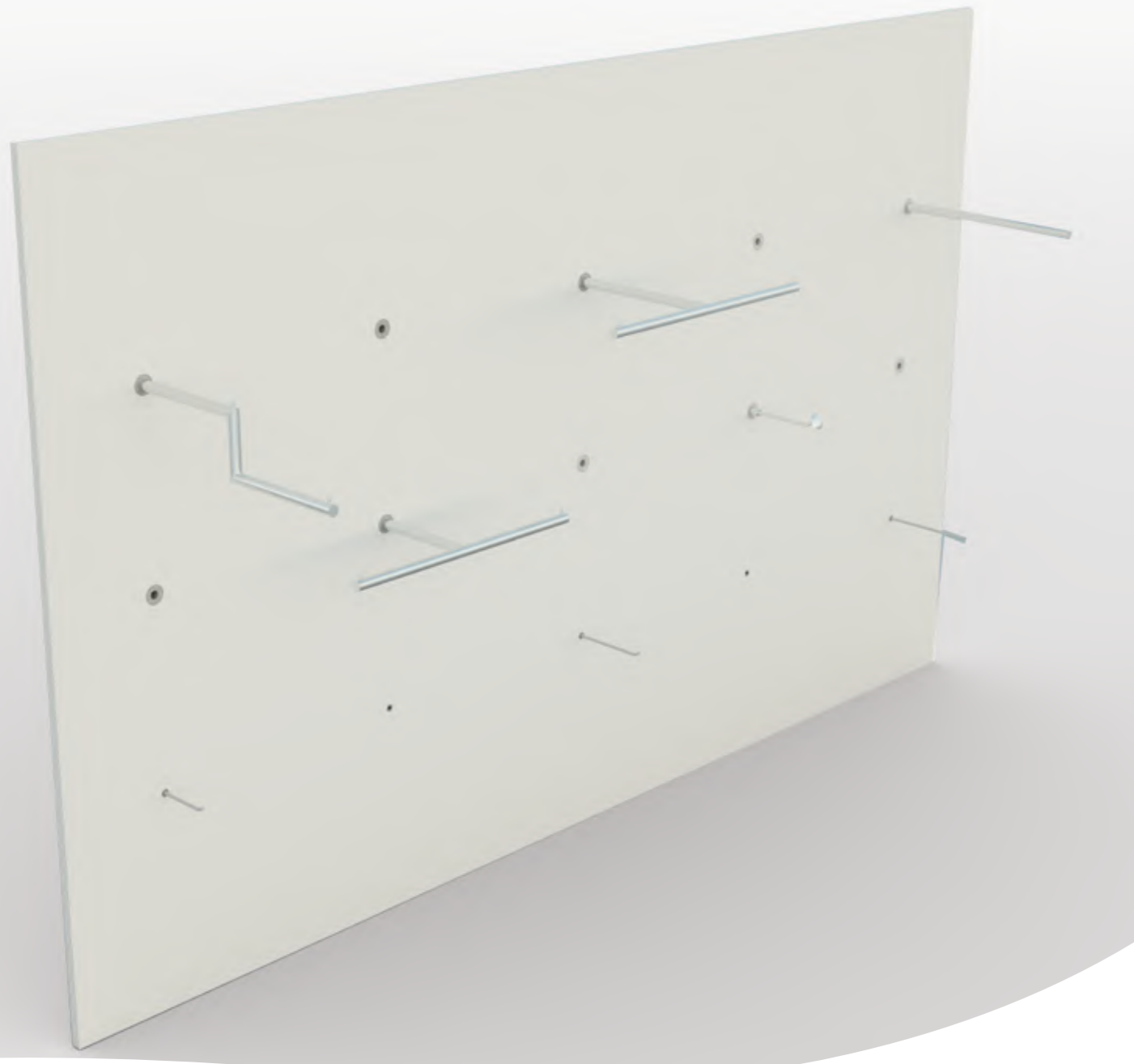
Our surface mounted cross rail system is a 3-part system that offers flexibility for single or double tier horizontal presentation.

A range of accessories can be manufactured to hook onto the system. Alternatively you can also merchandise straight off of the system with clothes hangers.

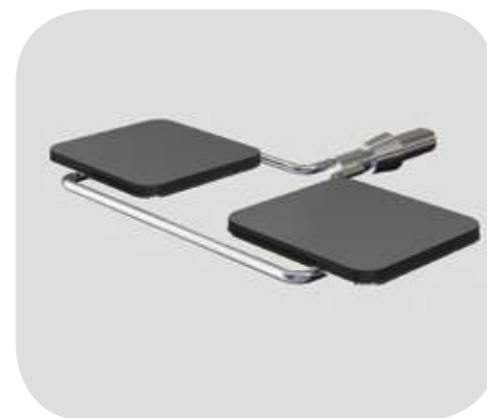
As standard the system comes in a mill finish. However, the front plate and end caps can be powder coated to any RAL or BS colour.

All profiles can be supplied in mill finish, satin anodised, polished chemically brightened, linished and/or powdercoated\*.

\*Subject to lead times.



**SSHELF**  
Mild Steel Folded Shoe Shelf  
POWDER COATED

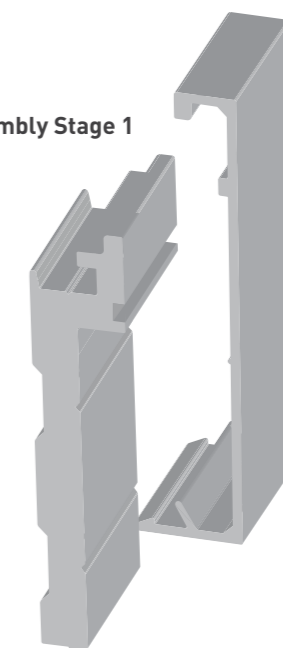


**SSHELFPE/C**  
Shoe Shelf with Foam Pads  
MATT CHROME



**FCRSBP**  
Back Plate for CRS  
Lengths (mm): 3000  
ALL FINISHES AVAILABLE

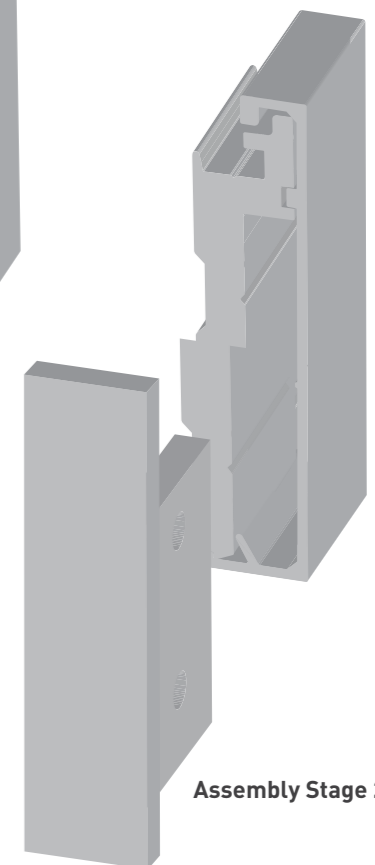
Assembly Stage 1



**FCRSEC**  
End Cap for CRS  
ALL FINISHES AVAILABLE



**FCRSFP**  
Front Plate for CRS  
Lengths (mm): 3000  
ALL FINISHES AVAILABLE



Assembly Stage 2

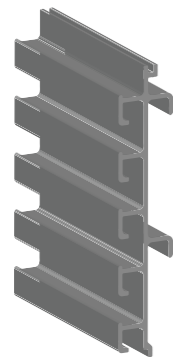
# Slatwall Panels

Aluminium slatwall panels are durable and have a close pitch which offers merchandising versatility. Powder coating to any RAL colour or anodising gives the aluminium panels an unrivalled contemporary look.

All profiles can be supplied in fill finish, satin anodised, polished chemically brightened, linished and/or powdercoated\*.

\*Subject to lead times.

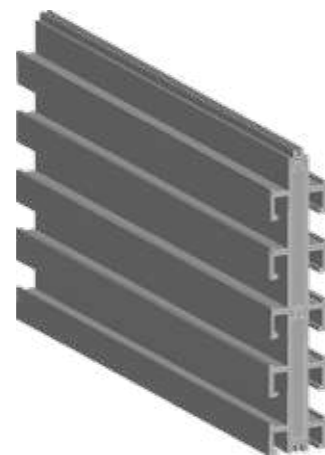
## Slatwall Panels 16mm, 24mm & 25mm Pitch



**FSLATSSRH**  
25mm Pitch Single Sided Slatwall Panel with Rear Hooks 125mm wide

Lengths (mm): 4000

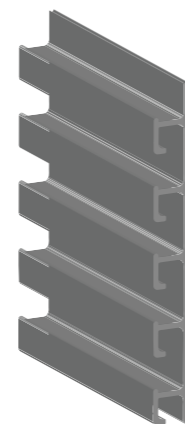
ALL FINISHES AVAILABLE



**FSLATDS25**  
25mm Pitch Double Sided Slatwall Panel 125mm wide

Lengths (mm): 4000

ALL FINISHES AVAILABLE

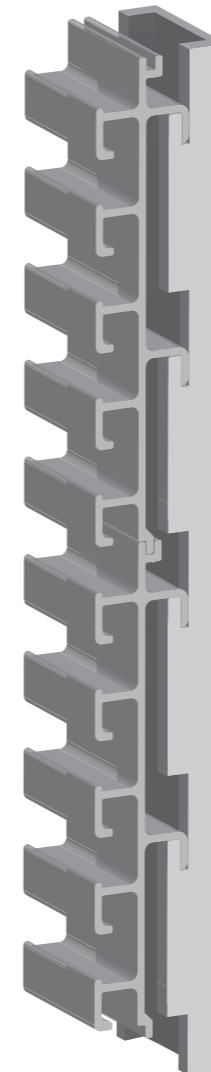


**FSLATSS25**  
25mm Pitch Single Sided Slatwall Panel 125mm wide

Lengths (mm): 4000

ALL FINISHES AVAILABLE

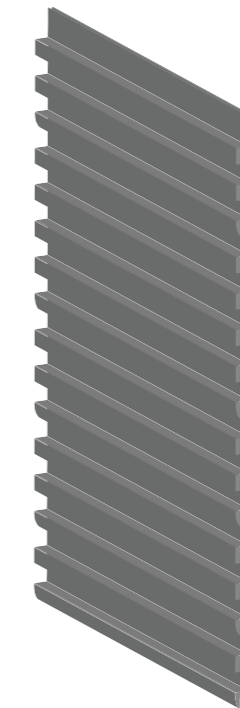
## Slatwall Panels 16mm, 24mm & 25mm Pitch



**FRHWC**  
Laser Cut Fixing Channel Available to Wall Mount FSLATSSRH

Lengths (mm): 2128.5

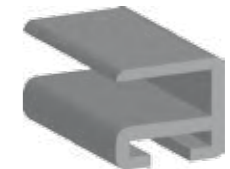
ALL FINISHES AVAILABLE



**FERI003**  
15.6mm Pitch Slatwall Panel 50mm wide

Lengths (mm): 3000

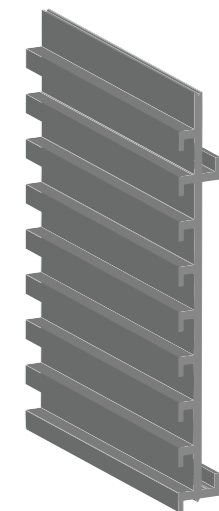
ALL FINISHES AVAILABLE



**FERI002**  
Optional Slatwall Framing Section to allow FERI003 Panel to be wall mounted or inserted onto a Gondola

Lengths (mm): 4000

ALL FINISHES AVAILABLE

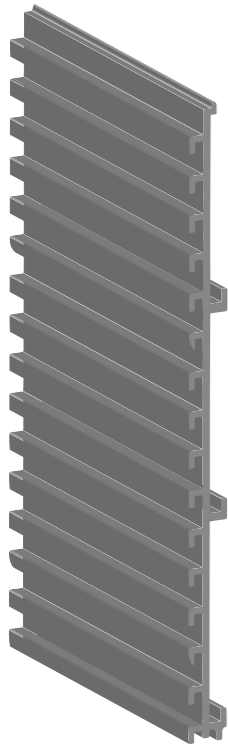


**FSLAT148RH**  
16mm Pitch Slatwall with Rear Hooks 148mm wide

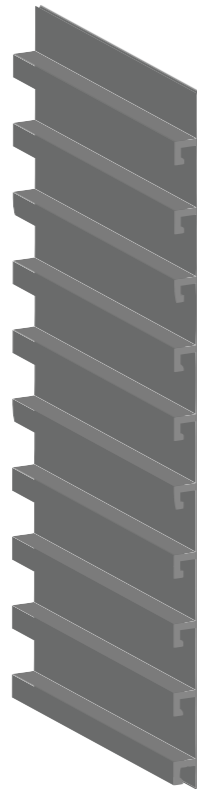
Lengths (mm): 4000

ALL FINISHES AVAILABLE

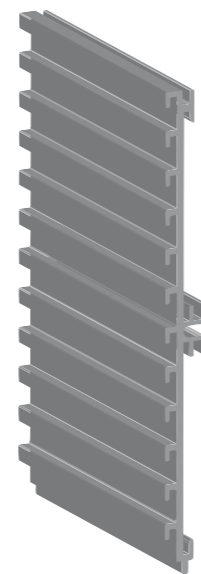
## Slatwall Panels 16mm, 24mm & 25mm Pitch



**FSLAT250RH**  
16mm Pitch Slatwall with  
Rear Hooks 249.6mm wide  
Lengths (mm): 4000  
ALL FINISHES AVAILABLE



**FANG01**  
24.8mm Pitch Slatwall  
Single Sided 251.25mm wide  
Lengths (mm): 4000  
ALL FINISHES AVAILABLE



**FSW196RF**  
15.8mm Pitch Slatwall  
196mm wide  
Lengths (mm): 4000  
ALL FINISHES AVAILABLE



Westside Distribution (Guitar Guitar)  
PRODUCT USED:  
• FSLATSS25 – Powdercoated black

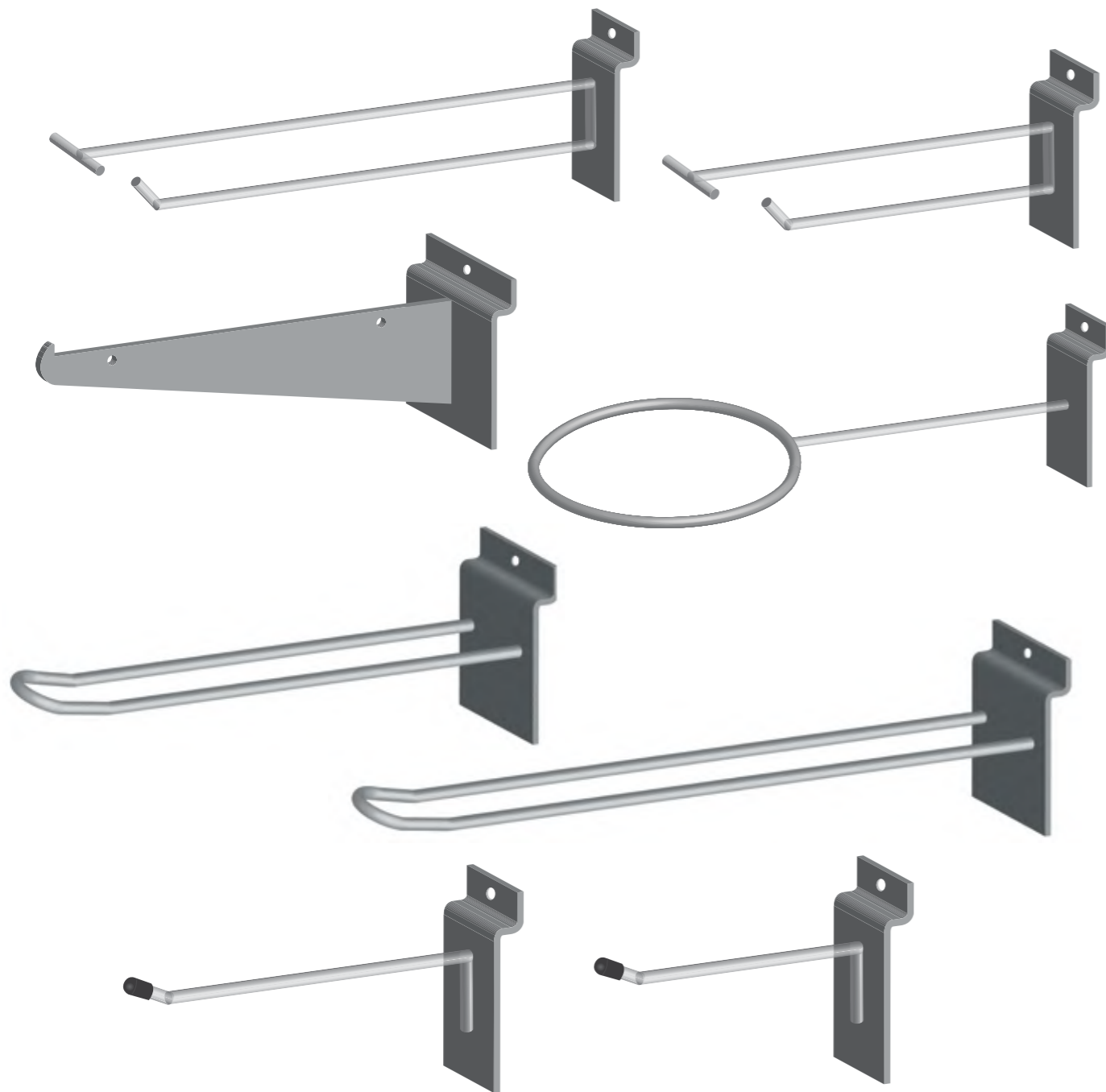
# Slatwall Accessories

Based on drawings supplied by yourselves, we have the capability to produce slatwall accessories to suit your own requirements.

There is the opportunity to manufacture in stainless steel or mild steel. Finishes available are, mirror chrome plated, brushed nickel and powder coating. Smaller quantities of steel display equipment are manufactured within the UK.

For larger quantities we can offer the option of Far East production.

Please find a selection of accessories below.



#### PRODUCTS USED:

- FSLATSSRH – 25mm pitch single-sided slatwall panel with rear hooks 125mm wide
- FRHSWC – Laser cut fixing channel to wall mount FSLATSSRH
- FMR002 – 32mm pitch single slotted section

## Lords of Notting Hill – St John's Wood

A fellow British establishment, the doors of Lords of Notting Hill first opened in 1984 in Westbourne Grove, London. They now have six stores based around central London and stock products to cover all aspects of the modern day home. We were introduced to the retailer and store designer at The Retail Design Expo in 2015 as they had a need for a new concept to allow merchandising flexibility whilst ensuring their stores remained a comfortable and inviting space for their customers to browse in.



We worked directly with the designer who outlined their requirements, mainly a high quality system to match the high quality products they offer. We were able to recommend products such as our single slotted tracks, aluminium panels and mild steel shelf brackets, all of which have been included in the new design concept. These products allowed a visually aesthetic system.



# Glass Sections

All profiles can be supplied in fill finish, satin anodised, polished chemically brightened, linished and/or powdercoated\*.

\*Subject to lead times.

## Mirror Trim

The MirrOtrim option allows for mirrors to be fitted from floor to ceiling.

MirrOtrim	Top	Bottom
A	11.7	11.6
B	32	24
C	16	8
D	7.9	7.9
E	1.2	1.2

Above measurements in millimetres.



**F5565**  
Un-equal Angle 16mm x 8mm x 1.59mm

Lengths (mm): 3100  
ALL FINISHES AVAILABLE



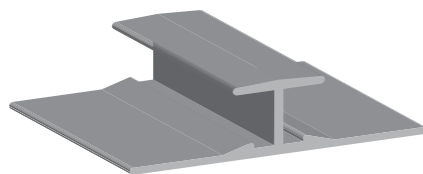
**F5589**  
T Section 16 x 6mm

Lengths (mm): 3100  
ALL FINISHES AVAILABLE



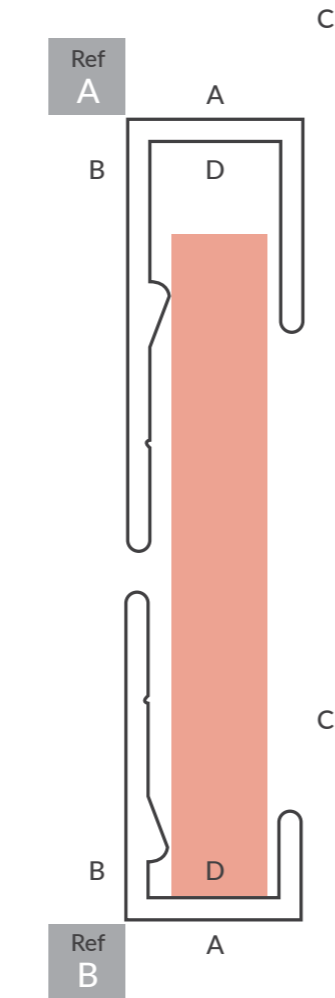
**F5569**  
Top Mirror Trim to suit 6mm Glass / Board

Lengths (mm): 3100  
ALL FINISHES AVAILABLE



**F5573**  
Division Bar to suit 6mm Glass / Board

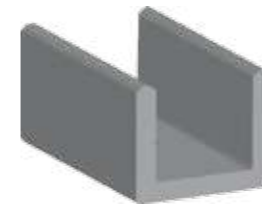
ALL FINISHES AVAILABLE



**F5572**  
Bottom Mirror Trim to suit 6mm Glass / Board

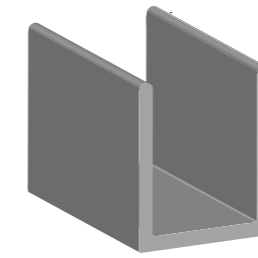
Lengths (mm): 3100  
ALL FINISHES AVAILABLE

## U Channels



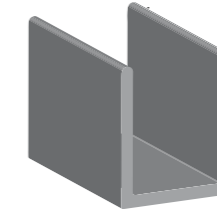
**F5564**  
U Channel to suit 6mm Glass / Board

Lengths (mm): 3100  
ALL FINISHES AVAILABLE



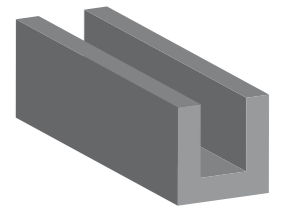
**FUC19**  
U Channel 19.05mm x 19.05mm x 1.6mm

Lengths (mm): 4000  
ALL FINISHES AVAILABLE



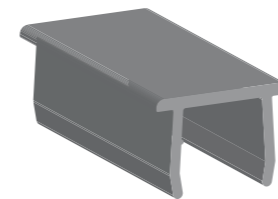
**F4540**  
U Channel to suit 10mm Glass / Board

Lengths (mm): 3100  
ALL FINISHES AVAILABLE



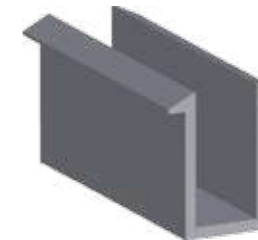
**FUC6**  
U Channel 12.7mm x 12.7mm x 3.18mm (6.3mm internal)

Lengths (mm): 4050  
ALL FINISHES AVAILABLE



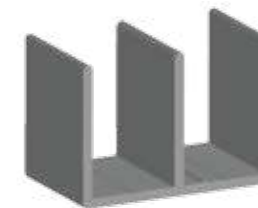
**FUC/INFIL**  
Push-in U Channel Infil

Lengths (mm): 3000  
ALL FINISHES AVAILABLE



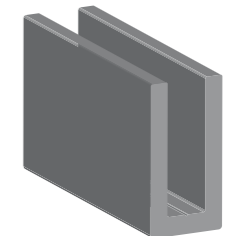
**FUC12**  
Winged U Channel 12.5mm inside gap

Lengths (mm): 3100  
ALL FINISHES AVAILABLE



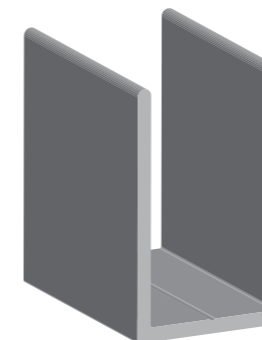
**F5563**  
Double U Channel 29.97mm x 20.62mm

Lengths (mm): 3100  
ALL FINISHES AVAILABLE



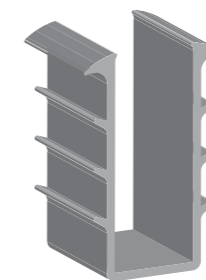
**FUC6.7**  
U Channel 25.4mm x 12.7mm x 3.18mm (6.7mm internal)

Lengths (mm): 4050  
ALL FINISHES AVAILABLE

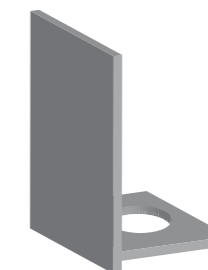


**FCH28**  
U Channel 28mm x 18mm x 28mm

Lengths (mm): 3000 / 4000  
ALL FINISHES AVAILABLE

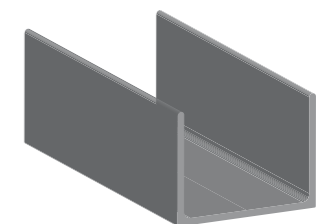


**FGAS/CH28**  
Gasket to suit FCH28



**FENDCAP/C-18**  
Endcap for FCH28 Channel

ALL FINISHES AVAILABLE



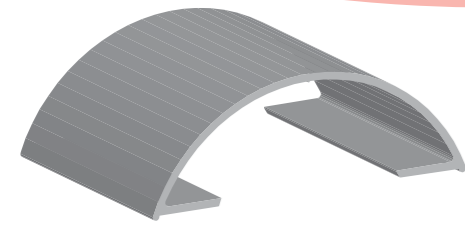
**FUC42x32x2**  
U Channel 42mm x 32mm x 2mm

Lengths (mm): 4100  
ALL FINISHES AVAILABLE

# Oddments

All profiles can be supplied in fill finish, satin anodised, polished chemically brightened, linished and/or powdercoated\*.

\*Subject to lead times.



**F5255**  
Half Round 90mm x 32mm  
Lengths (mm): 3750  
ALL FINISHES AVAILABLE



**F5256**  
Half Round 90mm x 32mm  
Lengths (mm): 3700  
ALL FINISHES AVAILABLE



**F5567**  
1 1/2 Inch Half Round Section, mates with F5571  
Lengths (mm): 3700  
ALL FINISHES AVAILABLE



**F6115**  
2 Inch Half Round Section, mates with F5571  
Lengths (mm): 3700  
ALL FINISHES AVAILABLE



**F5571**  
Base Plate, mates with F6115  
Lengths (mm): 3750  
ALL FINISHES AVAILABLE



**F5265**  
External Corner Section to suit 6mm Glass / Board  
Lengths (mm): 3100  
ALL FINISHES AVAILABLE



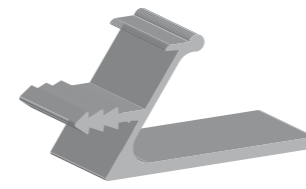
**FQUAD22**  
External Corner Quadrant Section 22mm x 22mm  
Lengths (mm): 4000  
ALL FINISHES AVAILABLE



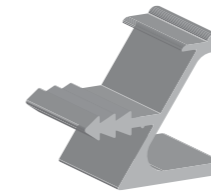
**FNOSE/R16**  
Shelf Nosing 32mm Diameter 16mm Radius  
Lengths (mm): 4000  
ALL FINISHES AVAILABLE



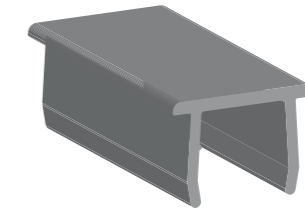
**F5708**  
F Section Shelf Edge  
Lengths (mm): 3000  
ALL FINISHES AVAILABLE



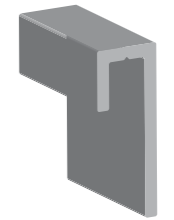
**FHAND01**  
Aluminium Handle  
Lengths (mm): 3100  
ALL FINISHES AVAILABLE



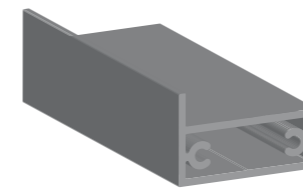
**FHAND03**  
Aluminium Handle  
Lengths (mm): 3100  
ALL FINISHES AVAILABLE



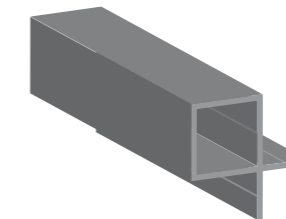
**FUC/INFIL**  
Push-in U Channel Infil  
Lengths (mm): 3000  
ALL FINISHES AVAILABLE



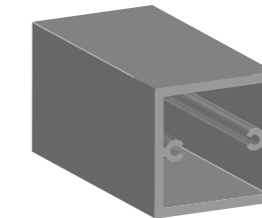
**FJSECJOB**  
Bespoke J Section  
Lengths (mm): 2100  
ALL FINISHES AVAILABLE



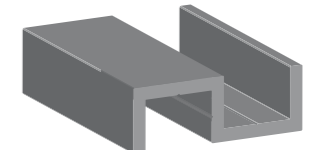
**FMR011**  
Box Section with 9mm Leg  
Lengths (mm): 3800  
ALL FINISHES AVAILABLE



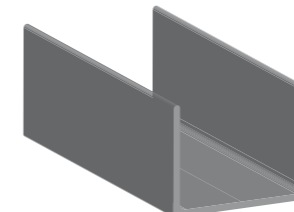
**FCS/40x37**  
Corner Section 40x37 with x2 25mm Flanges  
Lengths (mm): 3100 / 3300  
ALL FINISHES AVAILABLE



**FBOX45x45x3**  
Box Section 44.5mm x 44.5mm x 3.25mm  
Lengths (mm): 3100  
ALL FINISHES AVAILABLE



**FFSEC34x12x2**  
S Section 34.5mm x 12.5mm x 2.5mm  
Lengths (mm): 3100  
ALL FINISHES AVAILABLE



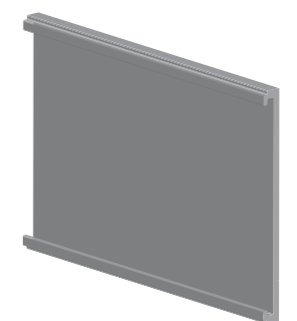
**FUC42x32x2**  
U Channel 42mm x 32mm x 2mm  
Lengths (mm): 4100  
ALL FINISHES AVAILABLE



**FTS41**  
Ticket Strip 41.88mm wide  
Lengths (mm): 3100  
ALL FINISHES AVAILABLE



**FTS20**  
Ticket Strip 20mm wide  
Lengths (mm): 3100  
ALL FINISHES AVAILABLE



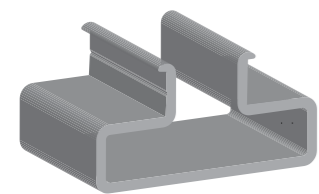
**FTS57**  
Ticket Strip 57mm wide  
Lengths (mm): 3100  
ALL FINISHES AVAILABLE

# MDF Shelf Holder, Wallboard Trims & Corner Sections

We are specialist stockists of a range of aluminium inserts and MDF shelf holders to suit MDF panels.

All profiles can be supplied in fill finish, satin anodised, polished chemically brightened, lished and/or powdercoated\*.

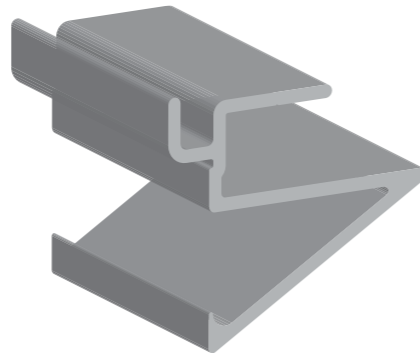
\*Subject to lead times.



**FMR006B**  
**Slatwall Insert**  
Lengths (mm): 3750  
ALL FINISHES AVAILABLE



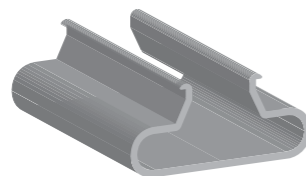
**FSWIDOVE**  
**Dovetail Slatwall Insert**  
Lengths (mm): 2450  
ALL FINISHES AVAILABLE



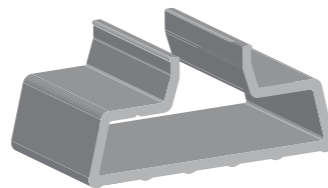
**FTW70A**  
**Shelf Holder for use with Slatwall**  
Lengths (mm): 3750  
ALL FINISHES AVAILABLE



**FSWIT**  
**T-Shape Slatwall Insert**  
Lengths (mm): 3750  
ALL FINISHES AVAILABLE

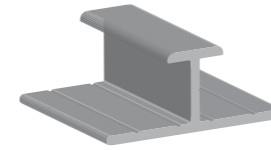


**FSWICURVT**  
**Slatwall Insert Curved T-Shape**  
Lengths (mm): 3750  
ALL FINISHES AVAILABLE

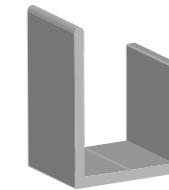


**FSWIG**  
**Slatwall Insert**  
Lengths (mm): 2600  
ALL FINISHES AVAILABLE

## 13mm Wallboard Trims Corner Sections



**FMA008A**  
**Division Bar**  
Lengths (mm): 3600  
ALL FINISHES AVAILABLE



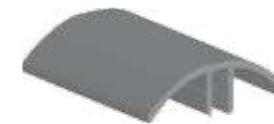
**FMA009A**  
**J Section with 20mm Front Face**  
Lengths (mm): 3600  
ALL FINISHES AVAILABLE



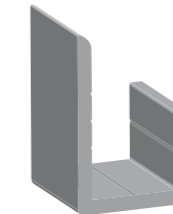
**FEXC/13**  
**External Corner Section**  
Lengths (mm): 3600  
ALL FINISHES AVAILABLE



**FMA005**  
**Y Section for 13mm wall boards, mates with FMA006**  
Lengths (mm): 4000  
ALL FINISHES AVAILABLE



**FMA006**  
**Domed Section for 13mm wall boards, mates with FMA005**  
Lengths (mm): 4000  
ALL FINISHES AVAILABLE



**FMA010**  
**J Section with Front Face**  
Lengths (mm): 3600 / 4000  
ALL FINISHES AVAILABLE

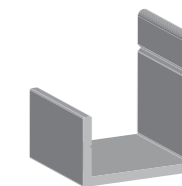


**FMA007**  
**Internal Corner Section**  
Lengths (mm): 4000  
ALL FINISHES AVAILABLE

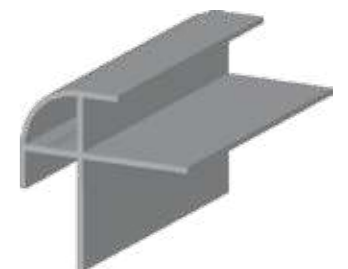
## 15mm Wallboard Trims Corner Sections



**FMA008C**  
**Division Bar**  
Lengths (mm): 4000  
ALL FINISHES AVAILABLE

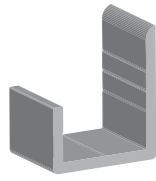


**FMA010C**  
**J Section with 11mm Front Face**  
Lengths (mm): 4000  
ALL FINISHES AVAILABLE

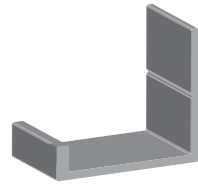


**F6207**  
**90 Degree Domed External Corner Section**  
Lengths (mm): 3700  
ALL FINISHES AVAILABLE

## 18mm Wallboard Trims Corner Sections



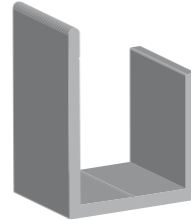
**FMA010B**  
**J Section with 13mm Front Face**  
 Lengths (mm): 4000  
 ALL FINISHES AVAILABLE



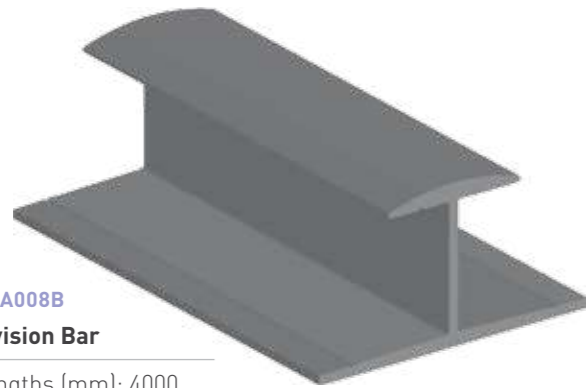
**FJSEC20x23x4**  
**J Section with 19.7mm Internal Gap**  
 Lengths (mm): 2600  
 ALL FINISHES AVAILABLE



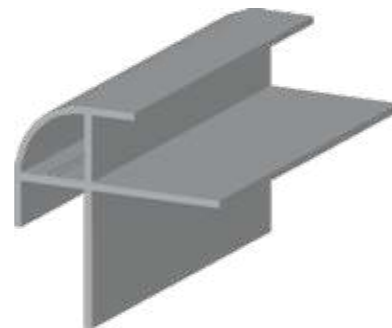
**F6405**  
**J Section 16mm x 24mm x 40mm**  
 Lengths (mm): 3100  
 ALL FINISHES AVAILABLE



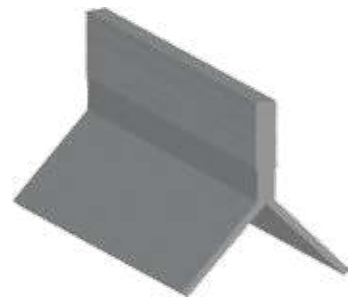
**FMA009AB**  
**J Section with 20mm Front Face**  
 Lengths (mm): 4000  
 ALL FINISHES AVAILABLE



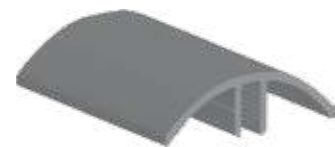
**FMA008B**  
**Division Bar**  
 Lengths (mm): 4000  
 ALL FINISHES AVAILABLE



**F6208**  
**90 Degree Domed External Corner Section**  
 Lengths (mm): 3700  
 ALL FINISHES AVAILABLE

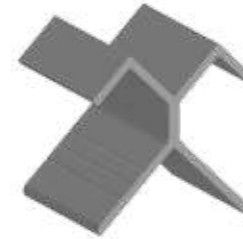


**FMA015**  
**Y Section for 18mm wallboards, mates with FMA014**  
 Lengths (mm): 4000  
 ALL FINISHES AVAILABLE

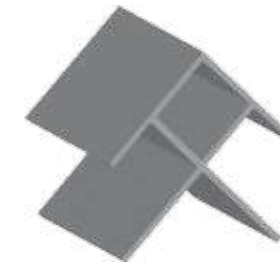


**FMA014**  
**Domed Section for 18mm wallboards, mates with FMA015**  
 Lengths (mm): 4000  
 ALL FINISHES AVAILABLE

## 18mm Wallboard Trims Corner Sections



**FEXC/18**  
**External Corner Section**  
 Lengths (mm): 4000  
 ALL FINISHES AVAILABLE



**F6210**  
**External Corner Section**  
 Lengths (mm): 3700  
 ALL FINISHES AVAILABLE



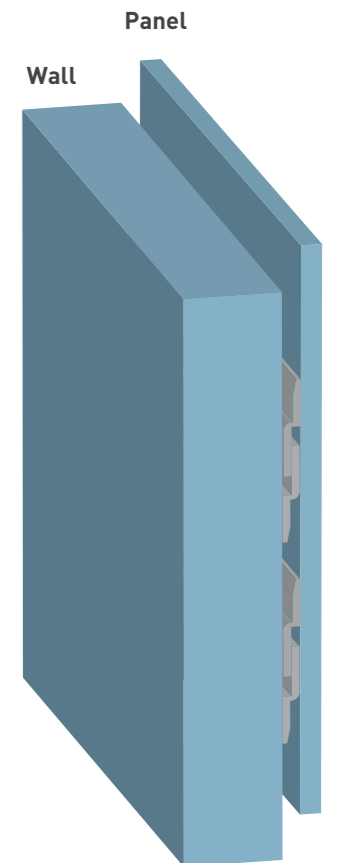
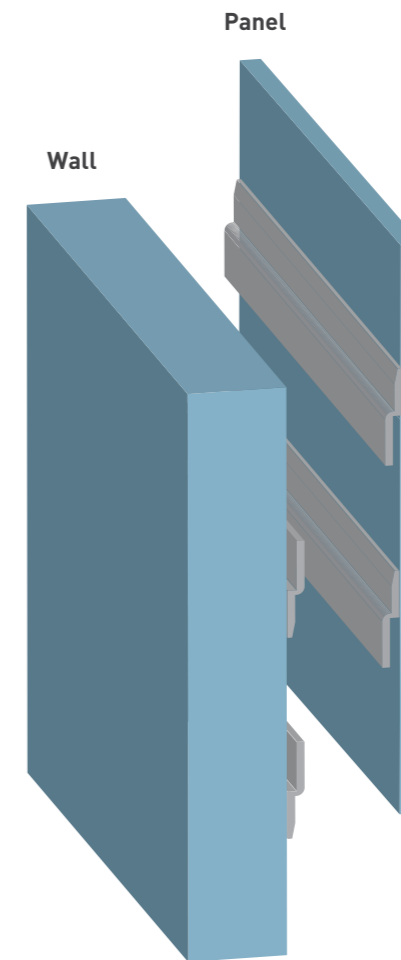
**FINT/TRI/18**  
**J Section 16mm x 24mm x 40mm**  
 Lengths (mm): 4000  
 ALL FINISHES AVAILABLE



**FSPLITBAT**  
**J Section Split Baton**  
 Lengths (mm): 4000  
 ALL FINISHES AVAILABLE



**FZED**  
**Board Hook Zed**  
 Lengths (mm): 4000  
 ALL FINISHES AVAILABLE



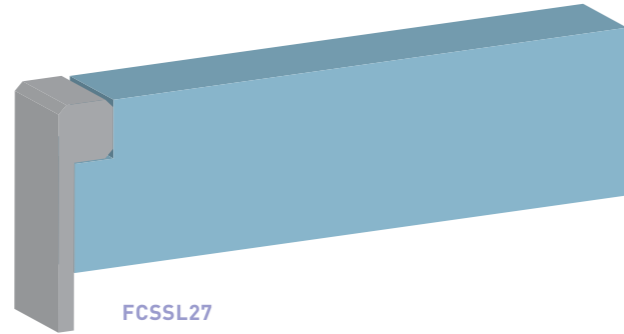
## Specialist Corner Sections



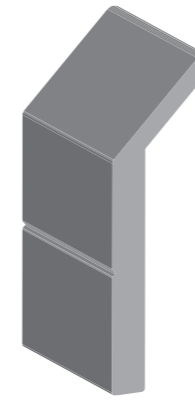
**FCSSL27**  
Corner Section 27mm x 7mm

Lengths (mm): 4000

ALL FINISHES AVAILABLE



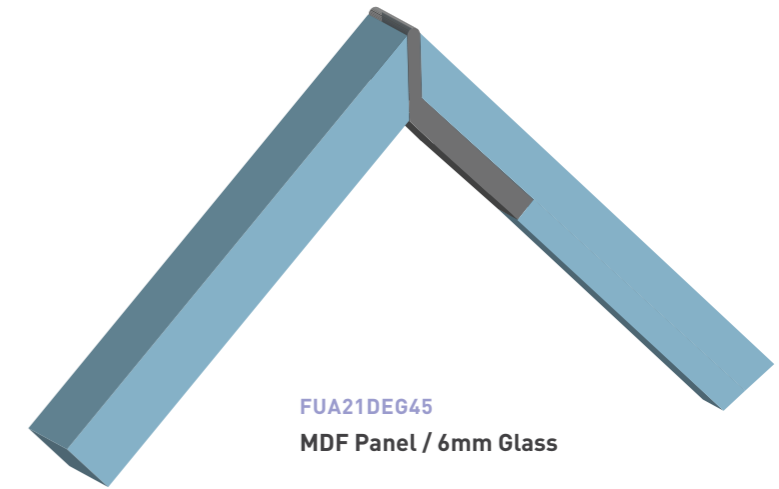
**FCSSL27**  
MDF Panel



**FUA21DEG45**  
Un-equal Angled Bar  
30.59mm

Lengths (mm): 4000

ALL FINISHES AVAILABLE



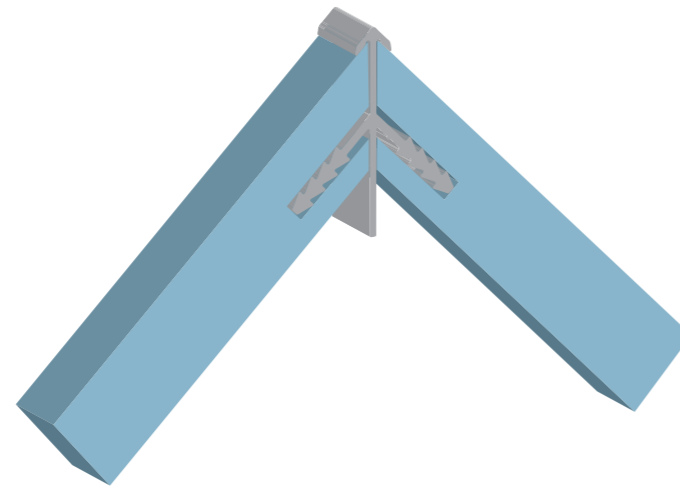
**FUA21DEG45**  
MDF Panel / 6mm Glass



**FBARR01**  
Arrowhead 90 degree Corner  
Section with Barbed Legs

Lengths (mm): 3000

ALL FINISHES AVAILABLE



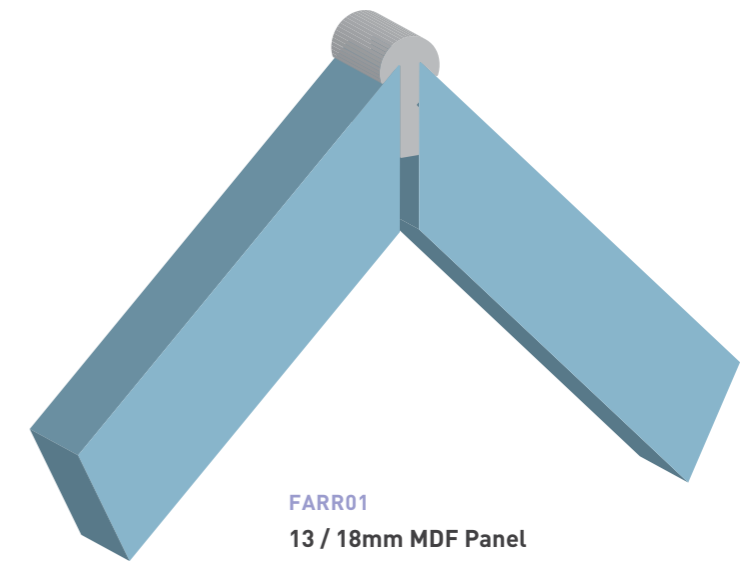
**FBARR01**  
13 / 18mm MDF Panel



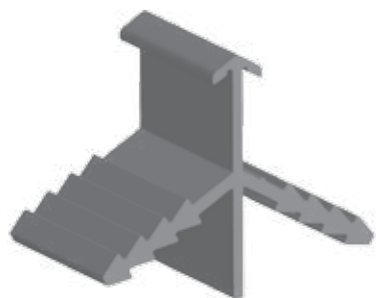
**FARR01**  
Arrowhead 90 degree  
Corner Section

Lengths (mm): 3000

ALL FINISHES AVAILABLE



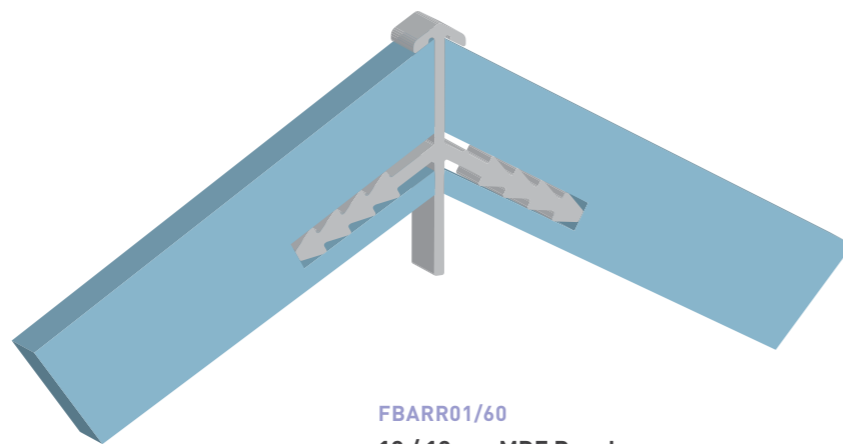
**FARR01**  
13 / 18mm MDF Panel



**FBARR01/60**  
Arrowhead 60 degree  
Corner Section with  
Barbed Legs

Lengths (mm): 3000

ALL FINISHES AVAILABLE



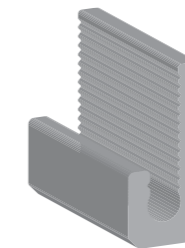
**FBARR01/60**  
13 / 18mm MDF Panel



**FARR02**  
Half Arrowhead  
Corner Section

Lengths (mm): 4000

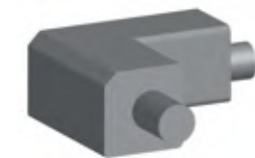
ALL FINISHES AVAILABLE



**FTJSEC15**  
Toothed J Section  
6.5mm x 6.5mm x 15mm

Lengths (mm): 4000

ALL FINISHES AVAILABLE



**FCSTJSEC15-2**  
2-Pin Knuckle Corner  
Section, mates with  
**FTJSEC15**

ALL FINISHES AVAILABLE

# Angles, T Sections & Flatbars

Aluminium unequal, equal angles, T sections and flat bars are stocked in three finishes: raw, polished chemically brightened and satin anodised. Below is just a small selection of sizes, please contact us if your required size is not shown below.

All profiles can be supplied in fill finish, satin anodised, polished chemically brightened, linished and/or powdercoated\*.

\*Subject to lead times.



**FEA9.5x1.6**  
**9.5mm x 9.5mm x 1.6mm**  
 Lengths (mm): 4000  
 ALL FINISHES AVAILABLE



**FEA16**  
**16mm x 16mm x 1.6mm**  
 Lengths (mm): 3100  
 ALL FINISHES AVAILABLE



**FEA19COP**  
**Coping Angle 19mm x 19mm**  
 Lengths (mm): 4000  
 ALL FINISHES AVAILABLE



**FEA22.23x3.18**  
**22.23mm x 22.23mm x 3.18mm**  
 Lengths (mm): 4000  
 ALL FINISHES AVAILABLE



**FEA25x1.59**  
**25mm x 25mm x 1.59mm**  
 Lengths (mm): 3100  
 ALL FINISHES AVAILABLE



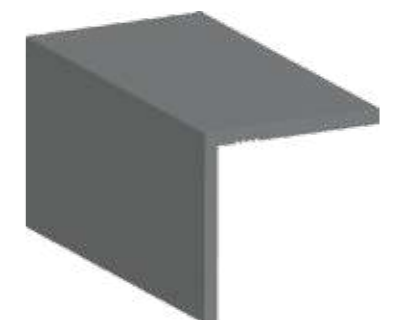
**FEA25x25x3**  
**25mm x 25mm x 3.18mm**  
 Lengths (mm): 4000  
 ALL FINISHES AVAILABLE



**FEA31x1.6**  
**31.75mm x 31.75mm x 1.6mm**  
 Lengths (mm): 3000 / 4000  
 ALL FINISHES AVAILABLE



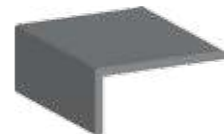
**FEA38x38x1.59**  
**38.1mm x 38.1mm x 1.59mm**  
 Lengths (mm): 3100  
 ALL FINISHES AVAILABLE



**FEA50x50x3.8**  
**50mm x 50mm x 3.18mm**  
 Lengths (mm): 4000  
 ALL FINISHES AVAILABLE



**F5565**  
**16mm x 18mm x 1.59mm**  
 Lengths (mm): 3100  
 ALL FINISHES AVAILABLE



**F6406**  
**16mm x 23mm x 1.59mm**  
 Lengths (mm): 4000  
 ALL FINISHES AVAILABLE



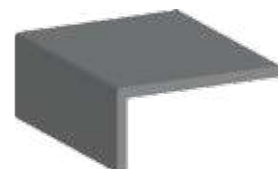
**F1046**  
**19mm x 19mm x 1.59mm**  
 Lengths (mm): 4000  
 ALL FINISHES AVAILABLE



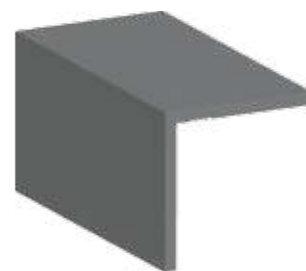
**F1343**  
**25mm x 12.5mm x 1.59mm**  
 Lengths (mm): 3100  
 ALL FINISHES AVAILABLE



**FUA25x19x1.6**  
**25.4mm x 19.05mm x 1.6mm**  
 Lengths (mm): 3100  
 ALL FINISHES AVAILABLE



**FUA40x6**  
**40mm x 6.8mm x 2mm**  
 Lengths (mm): 2500  
 ALL FINISHES AVAILABLE



**FEA50x1.59**  
**50.8mm x 50.8mm x 1.59mm**  
 Lengths (mm): 5000  
 ALL FINISHES AVAILABLE

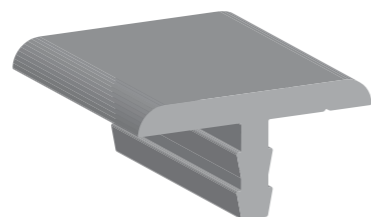
## T Sections / Flatbars



**F5589**  
**T Section 16mm x 6mm**  
 Lengths (mm): 3100  
 ALL FINISHES AVAILABLE



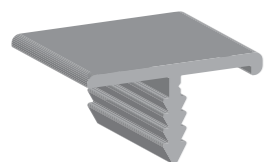
**F6668**  
**T Section 12.5mm x 7.75mm**  
 Lengths (mm): 3100  
 ALL FINISHES AVAILABLE



**FBSP01**  
**Barbed T Section 26mm x 13mm**  
 Lengths (mm): 3500  
 ALL FINISHES AVAILABLE



**FTEE12**  
**T Section 12.7mm x 12.7mm**  
 Lengths (mm): 4000  
 ALL FINISHES AVAILABLE



**FBTEE**  
**Barbed T Section with Lip 21mm x 11.2mm**  
 Lengths (mm): 4000  
 ALL FINISHES AVAILABLE



**FTEE38**  
**T Section 38.1mm x 38.1mm x 1.6mm**  
 Lengths (mm): 4000  
 ALL FINISHES AVAILABLE



**FFB12.7x6**  
**12.7mm x 6mm**  
 Lengths (mm): 4000  
 ALL FINISHES AVAILABLE



**FFB19x3**  
**19.05mm x 3.18mm**  
 Lengths (mm): 4000  
 ALL FINISHES AVAILABLE



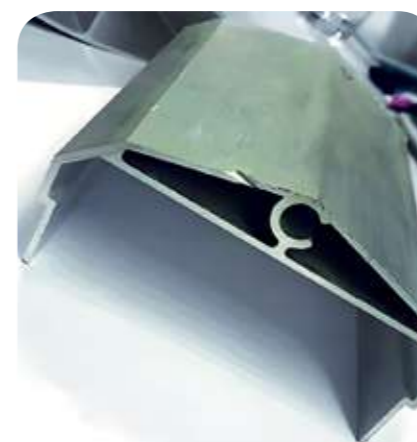
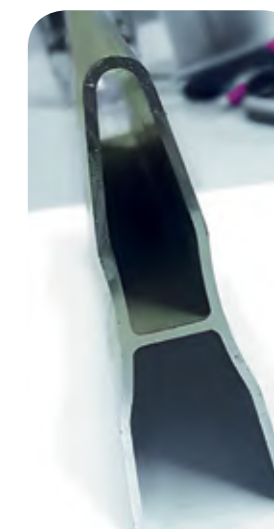
**FFB25x3**  
**25.4mm x 3.18mm**  
 Lengths (mm): 4000  
 ALL FINISHES AVAILABLE



**FFB50x3**  
**50.8mm x 3.18mm**  
 Lengths (mm): 4000  
 ALL FINISHES AVAILABLE

# Bespoke Extrusions

Working from a client's sketch or design, we can produce a bespoke extrusion to meet almost any design requirement. We can offer design advice, sample runs and small or large production runs. Our high quality profiles can be offered within very short lead times.



# Standard Profiles

## Square Box

19.05mm x 19.05mm x 1.6mm  
 25.4mm x 25.4mm x 1.6mm  
 31.75mm x 31.75mm x 1.6mm  
 31.75mm x 31.75mm x 3.25mm  
 38.1mm x 38.1mm x 3.18mm  
 40mm x 40mm x 2mm  
 44.45mm x 44.45 x 3.25mm  
 50mm x 50mm x 2mm  
 50mm x 50mm x 3mm  
 50.8mm x 50.8mm x 1.6mm  
 50.8mm x 50.8mm x 3.25mm  
 50.8mm x 50.8mm x 6.35mm  
 63.5mm x 63.5mm x 3.18mm  
 75mm x 75mm x 2mm  
 76.2mm x 76.2mm x 3.25mm  
 100mm x 100mm x 3mm  
 101.6mm x 101.6mm x 3.18mm  
 150mm x 150mm x 3mm

## Equal Angle

15.88mm x 15.88mm x 1.6mm  
 19mm x 19mm x 1.6mm  
 19mm x 19mm x 3.18mm  
 22.23mm x 22.23mm x 3.18mm  
 25mm x 25mm x 1.5mm  
 25mm x 25mm x 3.18mm  
 31.75mm x 31.75mm x 1.6mm  
 31.75mm x 31.75mm x 3.18mm  
 38.1mm x 38.1mm x 1.59mm  
 38.1mm x 38.1mm x 4.75mm  
 50mm x 50mm x 1.5mm  
 50mm x 50mm x 3.18mm  
 50.8mm x 50.8mm x 4.76mm  
 50.8mm x 50.8mm x 6.35mm

## Unequal Angle

16mm x 8mm x 1.59mm  
 25mm x 12.5mm x 1.5mm  
 25.4mm x 19.05mm x 1.6mm  
 38.1mm x 19.05 x 3.18mm  
 38.1 x 25.4mm x 1.59mm  
 38.1mm x 25.4mm x 3.18mm  
 50mm x 25mm x 1.5mm  
 50.8mm x 38.1mm x 3.18mm  
 50.8mm x 38.1mm x 4.78mm  
 76.2mm x 38.1mm x 3.18mm  
 76.2mm x 25.4mm x 3.18mm  
 76.2mm x 50.8mm x 4.76mm  
 101.6mm x 50.8mm x 3.18mm  
 101.6mm x 50.8mm x 6.35mm  
 101.6mm x 76.2mm x 6.35mm

## Square Box

38.1mm x 19.05mm x 1.6mm  
 38.1mm x 25.4mm x 3.18mm  
 40mm x 20mm x 2mm  
 50mm x 30mm x 3mm  
 50.8mm x 25.4mm x 3.18mm  
 50.8mm x 38.1mm x 3.25mm  
 76.2mm x 25.4mm x 3.18mm  
 76.2mm x 38.1mm x 3.18mm  
 76.2mm x 50.8mm x 3.18mm  
 101.6mm x 25.4mm x 3.18mm  
 101.6mm x 50.88mm x 6.35mm  
 152.4mm x 50.8mm x 3.2mm

## U Channel

12.7mm (b) x 25.4mm (l) x 3.18mm  
 12.7mm (b) x 12.7mm (l) x 3.18mm  
 14.54mm (b) x 17.28mm (l) x 1.52mm  
 10.67mm (b) x 9.52mm (l) x 1.52mm  
 18mm (b) x 28mm (l) x 1.6mm  
 16.5mm (b) x 17.5mm (l) x 2mm  
 19.05mm (b) x 19.05mm (l) x 1.6mm  
 25.4mm (b) x 19.05mm (l) x 3.18mm  
 25.4mm (b) x 25.4mm (l) x 3.18mm  
 31.75mm (b) x 31.75mm (l) x 3.18mm  
 38.1mm (b) x 19.05mm (l) x 3.18mm  
 42mm (b) x 32mm (l) x 2mm  
 44.45mm (b) x 25.4mm (l) x 3.18mm

## Flatbar

12.7mm x 3.18mm  
 15.88mm x 3.18mm  
 19.05mm x 3.18mm  
 31.75mm x 3.18mm  
 31.75mm x 6.35mm  
 38.1mm x 3.18mm  
 63.5mm x 3.18mm  
 127mm x 6.35mm

## Round Tube

50.8mm x 1.6mm  
 63.5mm x 3.175mm  
 76.2mm x 1.6mm  
 76.2mm x 3.25mm  
 101.6mm x 3.175mm

## Round Bar

31.75mm





Bespoke Framework

## Designer Childrenswear – Sunderland

We were recently approached by the award-winning independent retailer Designer Childrenswear in Sunderland asking us to design and manufacture a high-end, bespoke new concept specifically to showcase their luxury clothing range for children.

Over a 10-week period we designed, prototyped and manufactured a versatile system that has brought our clients' merchandising vision to life.



Bespoke Framework

## Morleys, Brixton

We produced and delivered a set of Mild Steel Frames based on a clients own design into Morleys of Brixton (as seen on the cover).

MORLEYS



Merrow Park  
Protective screen.

## Protective Screens

During the pandemic in 2020, we began to manufacture protective screens using our aluminium profiles and toughened glass.

Our screens are designed to be mechanically fixed in place, meaning they are durable and long lasting.

We have designed them using these materials to ensure they can be cleaned time and time again, also if they are ever removed it also means they are fully recyclable.

Our screens can be found in many environments including council buildings, doctors' surgeries and also in our local NHS trust, we have also become an approved supplier within the Government CCS Covid-19 catalogue.

- COST EFFECTIVE
- HYGIENIC
- CLEANABLE
- FULLY RECYCLABLE
- BUILT TO LAST
- UK MANUFACTURED



MRI, Hastings  
Protective screen.

# Bespoke Mild Steel Framework – made to order

At DIA Systems, as well as offering the profiles we keep in stock, we also work closely with clients to produce bespoke sections that are designed to suit their needs. If a client has a sketch, drawing, or even just an idea, we can help realise such systems.

All of our stocked profiles can be anodised or powder coated to meet the customer requirement; some of the items we stock are held in anodised, mill finish or polished chemically brightened finish.

If you would like more information on our bespoke services, or any of our standard products, please do not hesitate to get in touch.



## Anodising

Any of our stock profiles can be anodised silver, black, bronze or gold. This offers a high level of protection, a superior look and finish that can only be achieved through anodising. We can offer standard decorative anodising to a level of AA5 microns, but also if required supply anodised to AA25 microns for external use.



## Powder Coating

We can offer customers an unrivalled quality of finish and durability through our preparation and pre-treatment for electrostatic powder coating for internal or external applications. We offer a full range of RAL and BS colours to meet your specification.



## Chemically Brightening & Finishing

We can offer a finish that replicates stainless steel on our aluminium profiles, through linishing and chemically brightening either light bronze or silver. We can finish almost any profile and combine with a black/bronze polished finish.

These finishes have been widely used as an alternative to heavy/costly stainless steel angles to finish off columns or high quality perfumery units. Our chemically brightened extrusions are fully sealed, which means over time the finish will not tarnish unlike if you were to polish aluminium 'only' the material will tarnish over time as it is not sealed.

Just some of the retailers using our products

